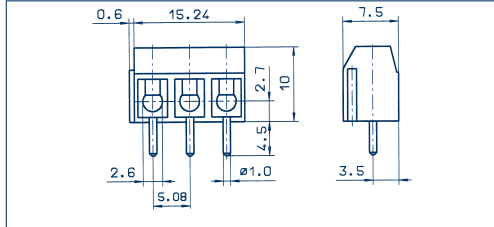
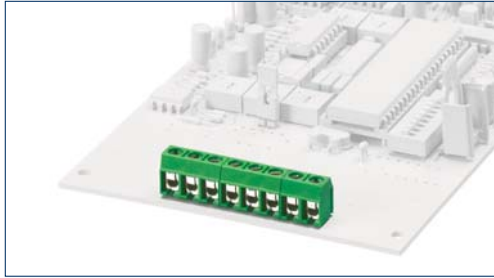


Terminals

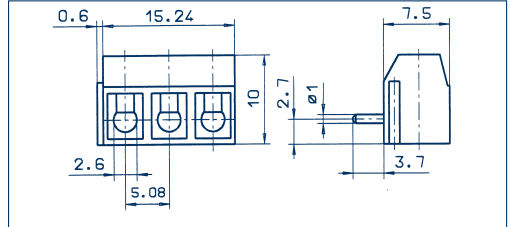
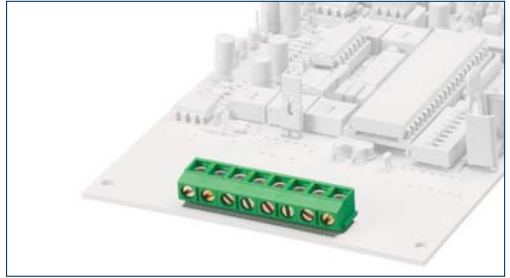


5,08 mm

PK 500/... /5,08-V vertical



PK 500/... /5,08-H horizontal



Drawings

Connection principle

Dimensions

| | |
|--------------------------------|------|
| Spacing mm | 5,08 |
| Insulation stripping length mm | 6,00 |
| PCB hole diameter mm | 1,30 |

Connection data

| | |
|---|------|
| Single wire (solid) mm ² | 1,50 |
| Stranded wire (flexible) mm ² | 1,00 |
| Stranded wire (with ferrules) mm ² | 0,75 |

Rating

| | 300 V | 250 V |
|--|-------|---------------|
| Rated voltage V | 300 V | 250 V |
| Rated current A | 15 A | 17,50 A (T60) |
| Cross section max. AWG/mm ² | 22-14 | 1,50 |
| Rated surge voltage | – | 2,00 kV |
| Rated torque/Screw size | – | 0,40 Nm/M2,6 |
| Contamination degree | – | – |

Materials

| | |
|--|----------------------|
| Insulating material/Flammability class | PA 6.6 V0 / UL 94 V0 |
| Temperature Range | -30°C / +105°C |
| Clamping part | CuZn |
| Clamping cage/Eccentric | – |
| Contact pin | – |
| Cage tension spring | – |
| Wire protection | stainless steel |
| Soldering lug | – |
| Contact Spring | – |

Order information

Standard colour(s)
(further colours on request, see page 5)

Wire-protection

| | |
|--------------------------------|------|
| Spacing mm | 5,08 |
| Insulation stripping length mm | 6,00 |
| PCB hole diameter mm | 1,30 |



| | 300 V | 250 V |
|--|-------|---------------|
| Rated voltage V | 300 V | 250 V |
| Rated current A | 15 A | 17,50 A (T60) |
| Cross section max. AWG/mm ² | 22-14 | 1,50 |
| Rated surge voltage | – | 2,00 kV |
| Rated torque/Screw size | – | 0,40 Nm/M2,6 |
| Contamination degree | – | – |

| | |
|--|----------------------|
| Insulating material/Flammability class | PA 6.6 V0 / UL 94 V0 |
| Temperature Range | -30°C / +105°C |
| Clamping part | CuZn |
| Clamping cage/Eccentric | – |
| Contact pin | – |
| Cage tension spring | – |
| Wire protection | stainless steel |
| Soldering lug | – |
| Contact Spring | – |

Order information

| No. of poles | Cat.-No. | | Qty.p.pck. |
|--------------|---------------------|-------------------------|------------|
| | green (Ral 6018) | dark grey (Ral 7016) | |
| 2 | 10154.1 | 10154.4 | 50 |
| 3 | 10155.1 | 10155.4 | 50 |
| 4 | 10156.1 | 10156.4 | 50 |
| 5 | 10157.1 | 10157.4 | 50 |
| 6 | 10158.1 | 10158.4 | 50 |
| 7 | 10159.1 | 10159.4 | 50 |
| 8 | 10160.1 | 10160.4 | 50 |
| 9 | 10161.1 | 10161.4 | 50 |
| 10 | 10162.1 | 10162.4 | 50 |
| 11 | 10163.1 | 10163.4 | 50 |
| 12 | 10164.1 | 10164.4 | 50 |
| 13 | 12505.1 | 12505.4 | 50 |
| 14 | 12506.1 | 12506.4 | 50 |
| 15 | 12507.1 | 12507.4 | 50 |
| 16 | 12508.1 | 12508.4 | 50 |
| 17 | 12509.1 | 12509.4 | 50 |
| 18 | 12510.1 | 12510.4 | 50 |
| 19 | 12511.1 | 12511.4 | 50 |
| 20 | 12512.1 | 12512.4 | 50 |
| 21 | 12513.1 | 12513.4 | 50 |
| 22 | 12514.1 | 12514.4 | 50 |
| 23 | 12515.1 | 12515.4 | 50 |
| 24 | 12516.1 | 12516.4 | 50 |

Wire-protection

| | |
|--------------------------------|------|
| Spacing mm | 5,08 |
| Insulation stripping length mm | 5,00 |
| PCB hole diameter mm | 1,30 |



| | 300 V | 250 V |
|--|-------|---------------|
| Rated voltage V | 300 V | 250 V |
| Rated current A | 15 A | 17,50 A (T60) |
| Cross section max. AWG/mm ² | 22-14 | 1,50 |
| Rated surge voltage | – | 2,00 kV |
| Rated torque/Screw size | – | 0,40 Nm/M2,6 |
| Contamination degree | – | – |

| | |
|--|----------------------|
| Insulating material/Flammability class | PA 6.6 V0 / UL 94 V0 |
| Temperature Range | -30°C / +105°C |
| Clamping part | CuZn |
| Clamping cage/Eccentric | – |
| Contact pin | – |
| Cage tension spring | – |
| Wire protection | stainless steel |
| Soldering lug | – |
| Contact Spring | – |

Order information

| No. of poles | Cat.-No. | | Qty.p.pck. |
|--------------|---------------------|-------------------------|------------|
| | green (Ral 6018) | dark grey (Ral 7016) | |
| 2 | 10176.1 | 10176.4 | 50 |
| 3 | 10177.1 | 10177.4 | 50 |
| 4 | 10178.1 | 10178.4 | 50 |
| 5 | 10179.1 | 10179.4 | 50 |
| 6 | 10180.1 | 10180.4 | 50 |
| 7 | 10181.1 | 10181.4 | 50 |
| 8 | 10182.1 | 10182.4 | 50 |
| 9 | 10183.1 | 10183.4 | 50 |
| 10 | 10184.1 | 10184.4 | 50 |
| 11 | 10185.1 | 10185.4 | 50 |
| 12 | 10186.1 | 10186.4 | 50 |
| 13 | 12529.1 | 12529.4 | 50 |
| 14 | 12530.1 | 12530.4 | 50 |
| 15 | 12531.1 | 12531.4 | 50 |
| 16 | 12532.1 | 12532.4 | 50 |
| 17 | 12533.1 | 12533.4 | 50 |
| 18 | 12534.1 | 12534.4 | 50 |
| 19 | 12535.1 | 12535.4 | 50 |
| 20 | 12536.1 | 12536.4 | 50 |
| 21 | 12537.1 | 12537.4 | 50 |
| 22 | 12538.1 | 12538.4 | 50 |
| 23 | 12539.1 | 12539.4 | 50 |
| 24 | 12540.1 | 12540.4 | 50 |

Accessories

Marking

Page 126 - 129

Page 126 - 129