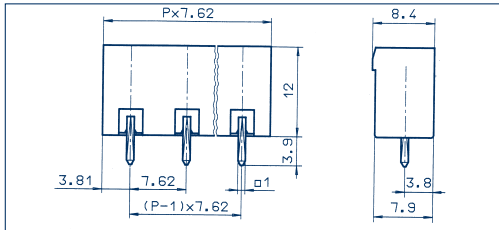


## P.C. board plug-in connectors

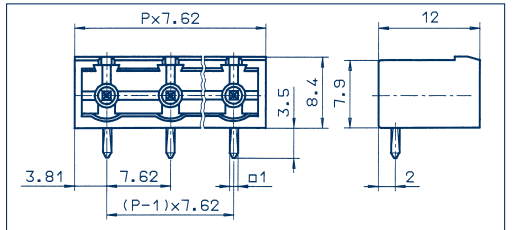
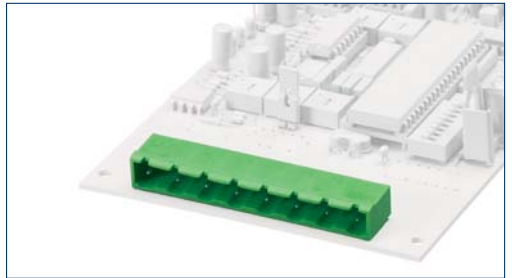
Header

7,62 mm

### STL 960/... /7,62-V-G vertical



### STL 960/... /7,62-H-G horizontal



## Drawings

### Connection principle

#### Dimensions

Spacing mm

7,62

Insulation stripping length mm

–

PCB hole diameter mm

1,40

#### Cross sections

single wire (solid) mm<sup>2</sup>

–

stranded wire (flexible) mm<sup>2</sup>

–

stranded wire (with ferrules) mm<sup>2</sup>

–

#### Output information

Rated voltage V



300 V



400 V

Rated current A

15 A

12 A (T60)

Cross section max. AWG/mm<sup>2</sup>

–

Rating impulse voltage

–

6,00 kV

Rated torque/Screw size

–

Dirt level

–

3

#### Materials

Insulating material/Flammability class

PA 6.6 V0 / UL 94 V0

Temperature Range

-30°C / +105°C

Clamping part

–

Clamping cage/Eccentric

–

Contact pin

Cu

Cage tension spring

–

Wire protection

–

Soldering lug

–

Contact Spring

–

#### Order information

Standard colour(s)

(further colours on request, see page 5)

No. of poles

Cat.-No.

Qty.p.pck.

●

green

(Ral 6018)

2

11729.1

50

3

11730.1

50

4

11731.1

50

5

11732.1

50

6

11733.1

50

7

11734.1

50

8

11735.1

50

9

11736.1

50

10

11737.1

50

11

11738.1

50

12

11739.1

50

13

11740.1

50

14

11741.1

50

15

11742.1

50

16

11743.1

50

No. of poles

Cat.-No.

Qty.p.pck.

●

green

(Ral 6018)

2

11744.1

50

3

11745.1

50

4

11746.1

50

5

11747.1

50

6

11748.1

50

7

11749.1

50

8

11750.1

50

9

11751.1

50

10

11752.1

50

11

11753.1

50

12

11754.1

50

13

11755.1

50

14

11756.1

50

15

11757.1

50

16

11758.1

50

### Accessories

Coding

Page 124 - 125

Page 124 - 125