

D

THIS DRAWING AND DESIGN HEREON CONSTITUTES A PROPRIETARY DESIGN OF PACKARD ELECTRIC DIVISION AND IS NOT TO BE DUPLICATED OR REPRODUCED WITHOUT AUTHORITY OF PACKARD ELECTRIC DIVISION

DO NOT SCAL

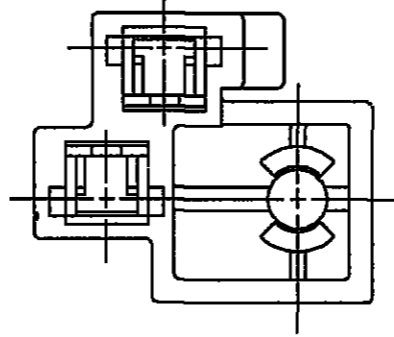
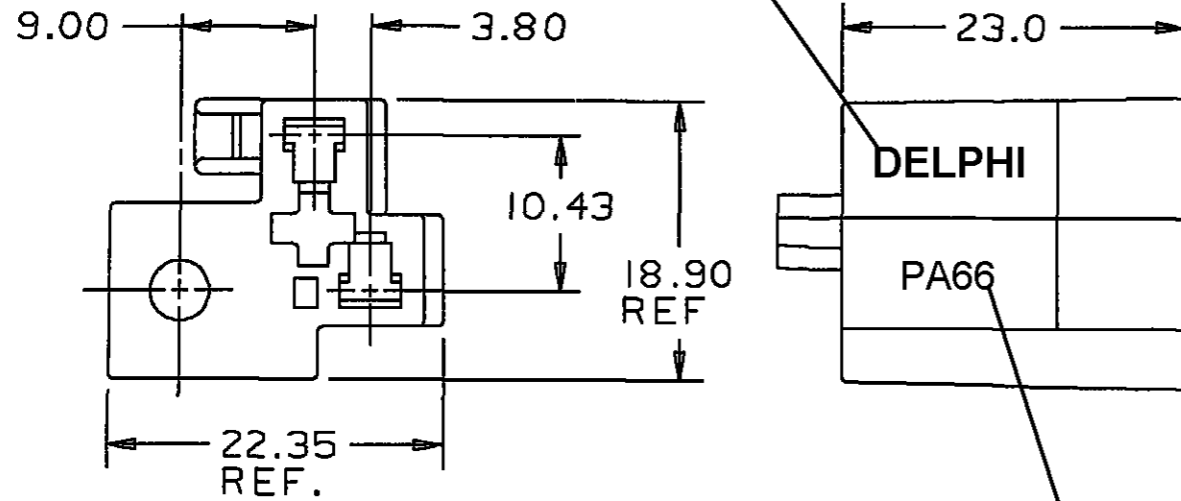
(2.3)X(0.1) RAISED DELPHI CORPORATE BRAND TO BE LOCATED ON ANY EXTERIOR SURFACE VISIBLE AT FINAL ASSEMBLY .OPTIONAL CONSTRUCTION TO BE "PED" OR NO LOGO.

DRAWING NO

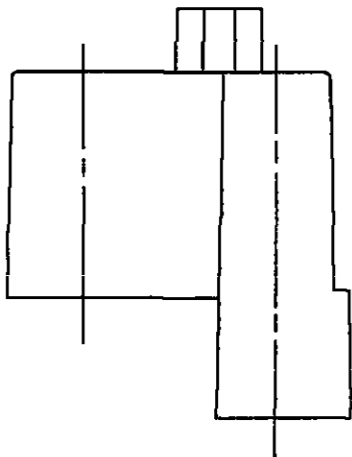
1204 7955

DATE	SYM	REVISION RECORD	AUTH	DR	CF
25JN84	B	REVISED & REDRAWN			
18JN84	—	PART NO WAS EX-74933 & RELEASED	84005	—	DJJ
02JA85	C	REVISED & REPLOTED	94935	LT	JM
16NO01	004	MAT'L WAS PA6	217255	LEG	GEG

PACKARD ELECTRIC DIVISION
GENERAL MOTORS CORPORATION
WARREN, OHIO



(2.3)X(0.1) RAISED CHARACTERS AS SHOWN TO BE LOCATED ON ANY EXTERIOR SURFACE VISIBLE AT FINAL ASSEMBLY.OPTIONAL CONSTRUCTION TO BE NO MATERIAL RECYCLING CODE.

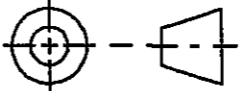


- NOTES — 1. USE TERMINAL I2047958 OR, EQUIVALENT.
2. ACCEPTS I2047956 SECONDARY LOCK.

RONART (MRM)			
P.N.C. CODE			
CODE NO	6900	TOLERANCE UNLESS OTHERWISE SPECIFIED	
QC		DECIMAL	ANGULAR ± 2°
DWG. DATE	25JN84	SCALE	NONE
EST NO		DR.	
REFERENCE NO	D	CK.	D.J.JORDAN
12047955 SIZE		DATE	27AU84
		APPR	R. ADDUCI
		DATE	230C84
MATERIAL SPEC	M3592001 - PA66 HS IM BLK		
NAME	CONNECTOR BODY-280 SERIES-2 FEMALE TERMINALS W/FIBER OPTIC		

C02D3088

THIRD ANGLE PROJECTION



CD.C.MP.F.2.I2047955.0D

PART NO	1204 7955	SIZE	B
OUTLINE DRAWING			

PACKARD ELECTR.