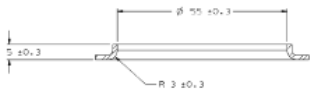
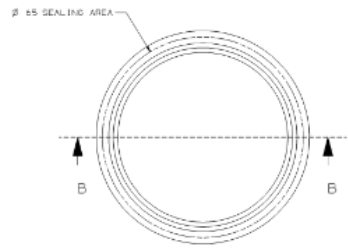
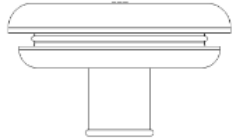
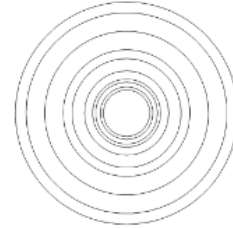
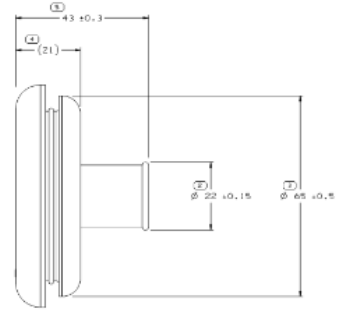
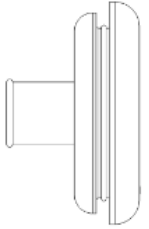
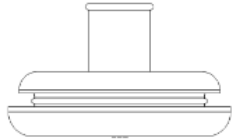


SYMBOL DEFINITION		MISSING SYMBOLS		REVISED		REVISION HISTORY		APP	DATE
A DIMENSION WITHOUT AN INSPECTION REPORT SYMBOL (□) DOES NOT REQUIRE INSPECTION. IT MAY BE CONTROLLED ON THE INDIVIDUAL COMPONENT DRAWING.	TOTAL NO. OF INSPECTIONS REQUIRED	NO. MISSING SYMBOL NUMBER	DATE	BY	DESCRIPTION	DATE	BY		
	5								
	LAST NO. USED								
	5								



SECTION B-B
MOUNTING HOLE INFORMATION
SCALE 2:1



- NOTES:
- UNLESS OTHERWISE SPECIFIED AND/OR INDICATED, DIMENSIONS ARE TO FACE OF VIEW SHOWN AND AUTOMATICALLY ROUNDED BY COMPUTER FOR INSPECTION. (SEE MATH MODEL FOR PRECISE DIMENSION) FOR ALL OTHER DIMENSIONS NOT SHOWN BUT REQUIRED FOR TOOL BUILD, SEE MATH MODEL FOR PRECISE TOOL PATH DATA.
 - THIS ORNAMENT TO BE USED WITH HARNESS SINGLE SMOOTH TAPE WRAPPED USING 3 MIL TAPE HAVING NO SLITS ON EDGES.
 - PART IS SYMMETRICAL ABOUT CENTERLINE, EXCEPT AS NOTED.
 - REFERENCE QUALITY PART NUMBER 8201 9-01070.
 - THIS PART IS NOT CONTROLLED FOR AUTOMATIC FEEDING.
 - AS 31X(0,1) DELPHI CORPORATE BRAND TO BE LOCATED ON ANY EXTERIOR SURFACE, PREFERABLY VISIBLE AT FINAL ASSEMBLY. OPTIONAL CONSTRUCTION TO BE "PED".

MAXIMUM ALLOWABLE DIMENSION OF STRETCHED CROMET HEAT WELD USING A 4 MILL SPEAKER

PART DRAWING	
DATE	REV
DATE OF 25,802	1D
SELECT CONSTRUCTION SPECIFICATIONS	
<small>THIS DRAWING IS A COMPUTER GENERATED DRAWING. IT IS NOT TO BE USED FOR MANUFACTURING PURPOSES WITHOUT THE APPROVAL OF THE DESIGN ENGINEER. ANY CHANGES TO THIS DRAWING MUST BE APPROVED BY THE DESIGN ENGINEER. THIS DRAWING IS THE PROPERTY OF DELPHI CORPORATION. IT IS TO BE USED ONLY FOR THE MANUFACTURE OF DELPHI PRODUCTS. IT IS NOT TO BE REPRODUCED OR TRANSMITTED IN ANY FORM OR BY ANY MEANS, ELECTRONIC OR MECHANICAL, INCLUDING PHOTOCOPYING, RECORDING, OR BY ANY INFORMATION STORAGE AND RETRIEVAL SYSTEM.</small>	
ISSUED BY	12045255

DELPHI	
DELPHI PREPARED ELECTRIC SYSTEMS	
PART NO. 12066591	
DATE	REV
DATE 21, 1	REV 1, 1, 1
DATE 21, 1	REV 1, 1, 1