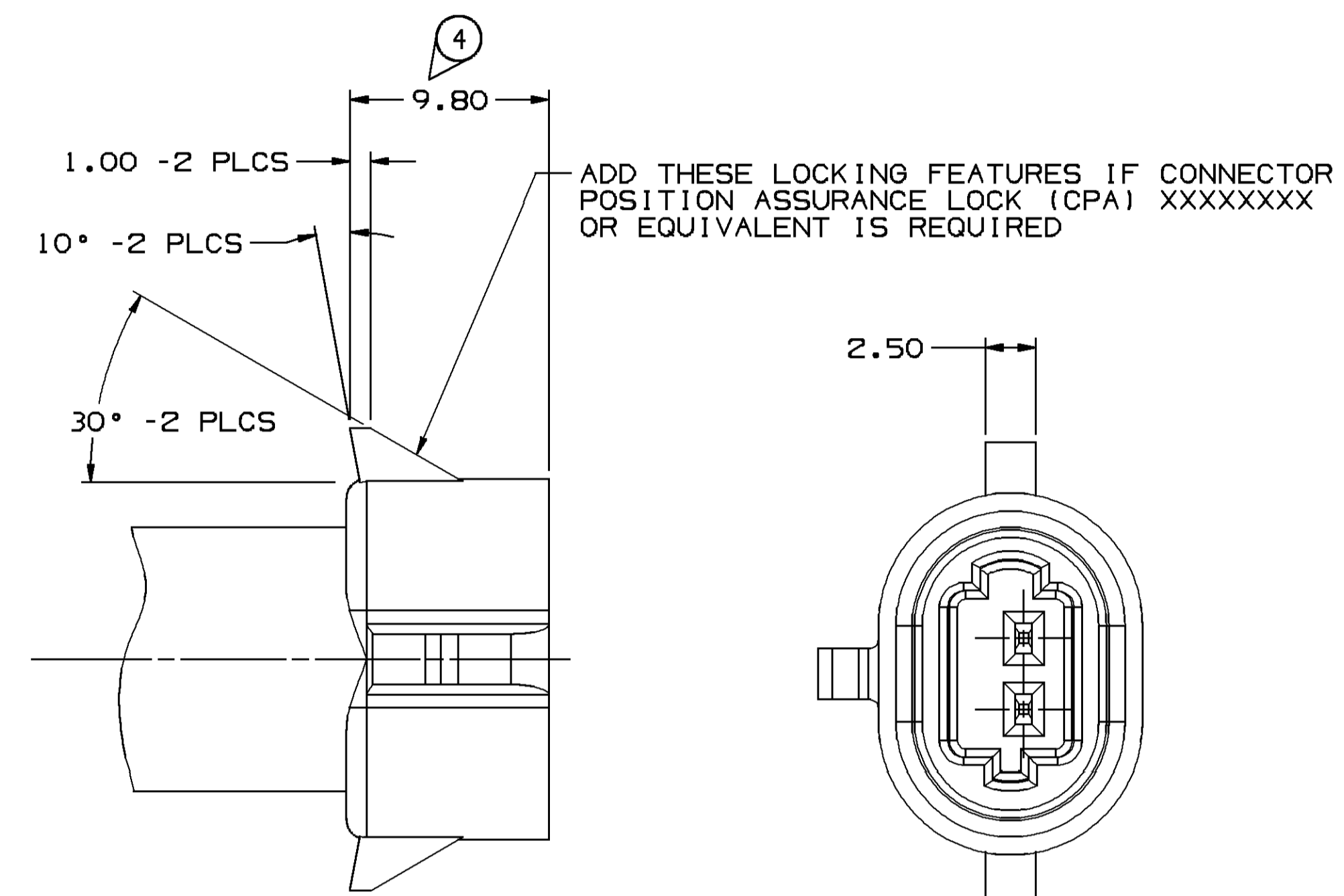


**MATERIAL SPECIFICATIONS**

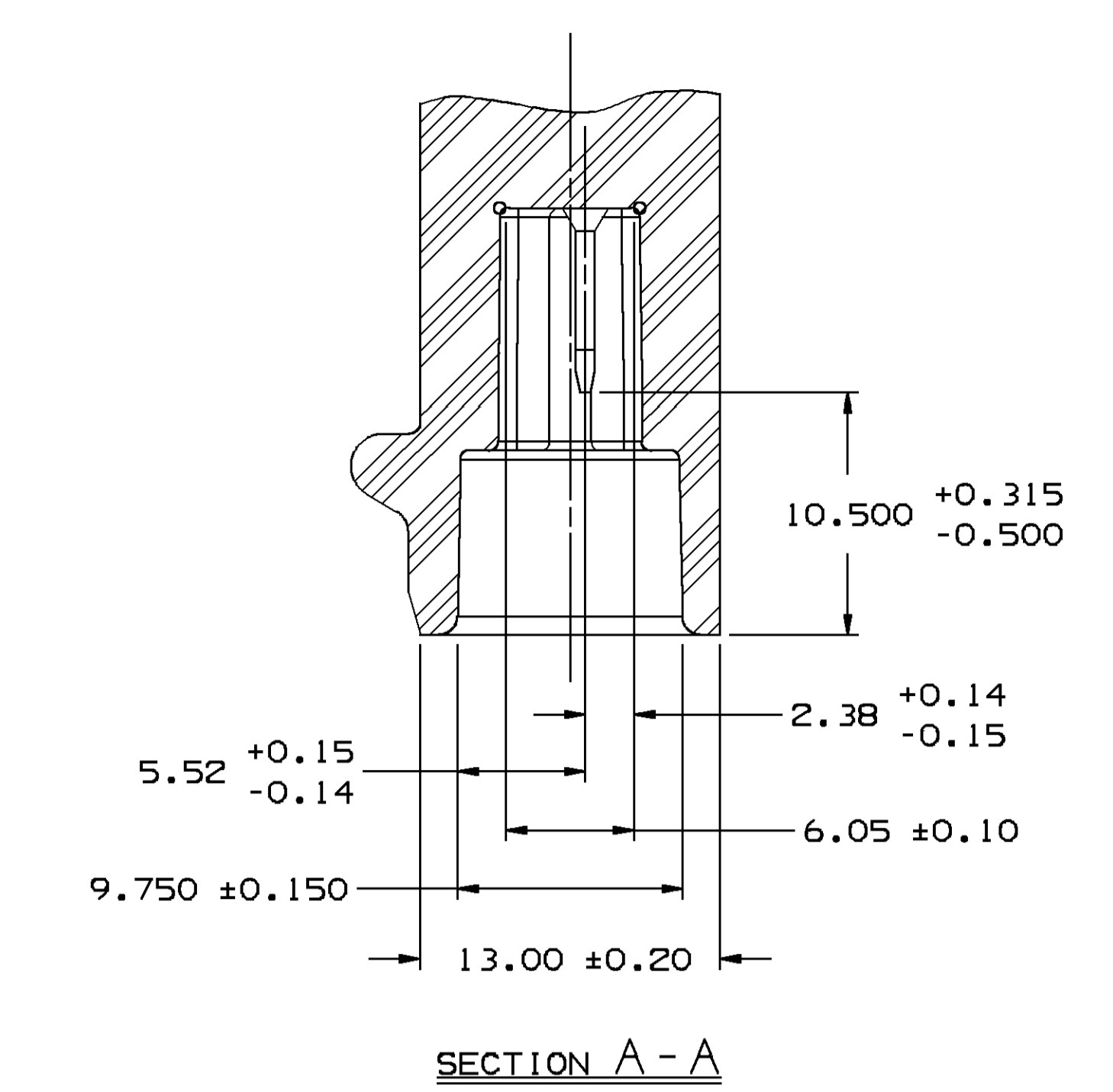
**RECOMMENDED**  
 BASE METAL - CDA-210, EXTRA SPRING TEMPER  
 PLATING - 0.0050±0.0025 MM THICK TIN

**MINIMUMS**  
 ELECTRICAL CONDUCTIVITY - ≥20% IACS AT 20°C. USE OF A MATERIAL WITH CONDUCTIVITY < 20% IACS MUST BE APPROVED BY PACKARD ELECTRIC MATERIALS ENGINEERING.  
 TENSILE STRENGTH - 407 MPa  
 PLATING - FOR LOW ENERGY (≤5v) AND NON-PASSENGER COMPARTMENT POWER CIRCUITS, 0.0050±0.0025 MM THICK TIN. FOR MATERIALS CONTAINING 10% OR MORE ZINC, AN UNDERPLATE OF COPPER 0.0050±0.0025 MM THICK IS REQUIRED.  
 BLADE THICKNESS  
 UNPLATE = 0.813±0.025  
 TIN PLATE = 0.823±0.030

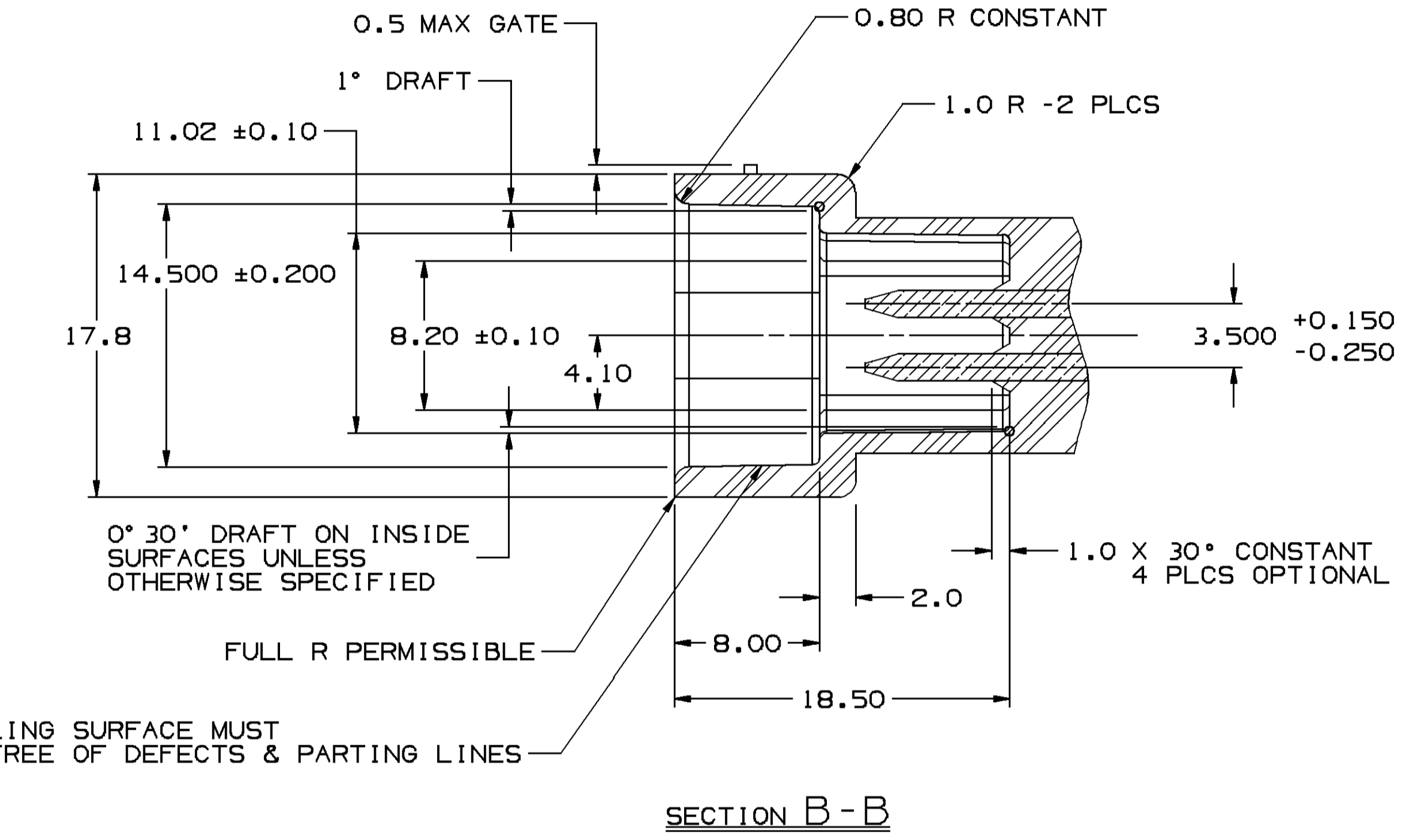
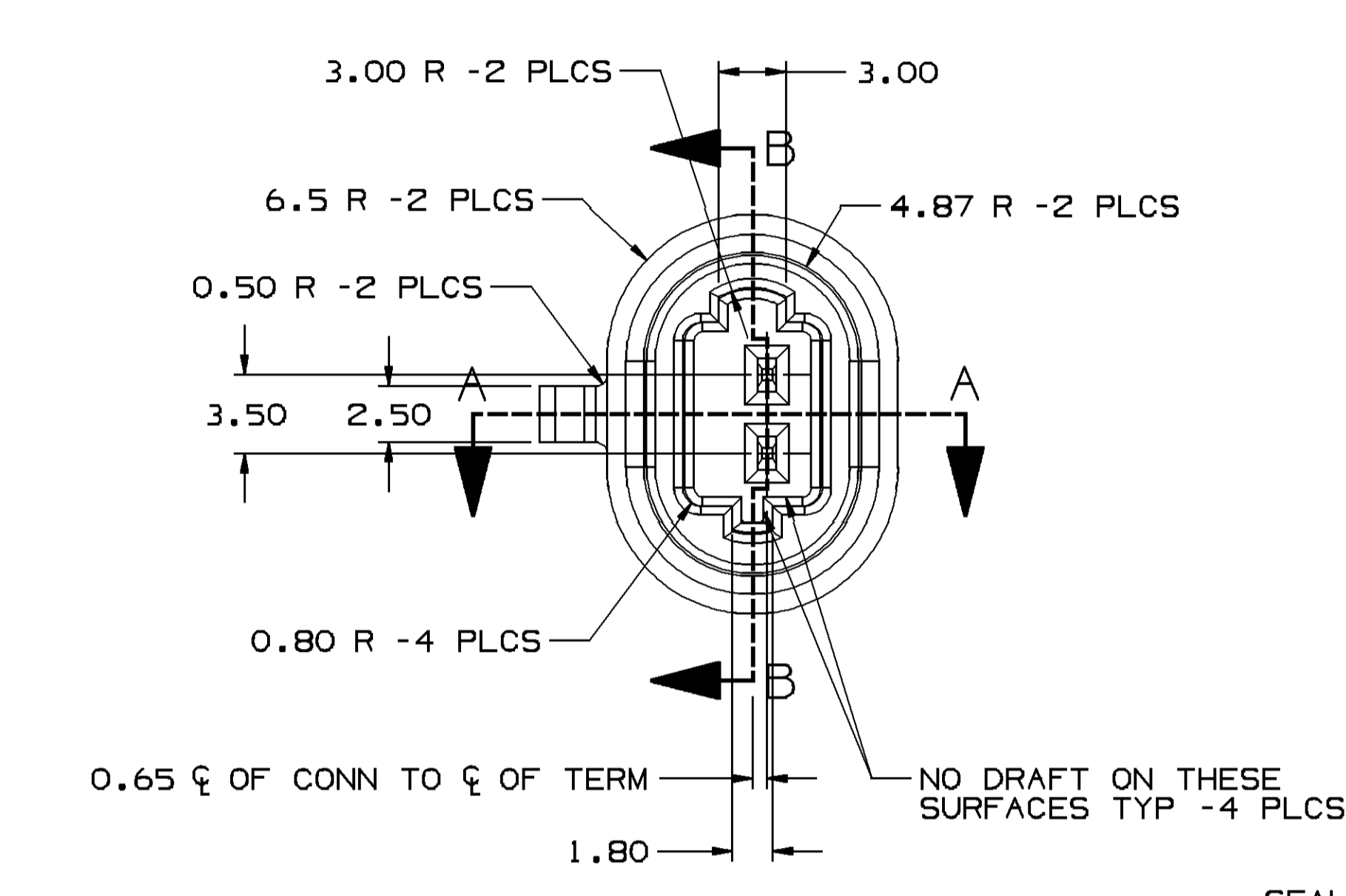
**MATING BLADE INFORMATION**  
 SCALE 8:1



**OPTIONAL CONSTRUCTION**

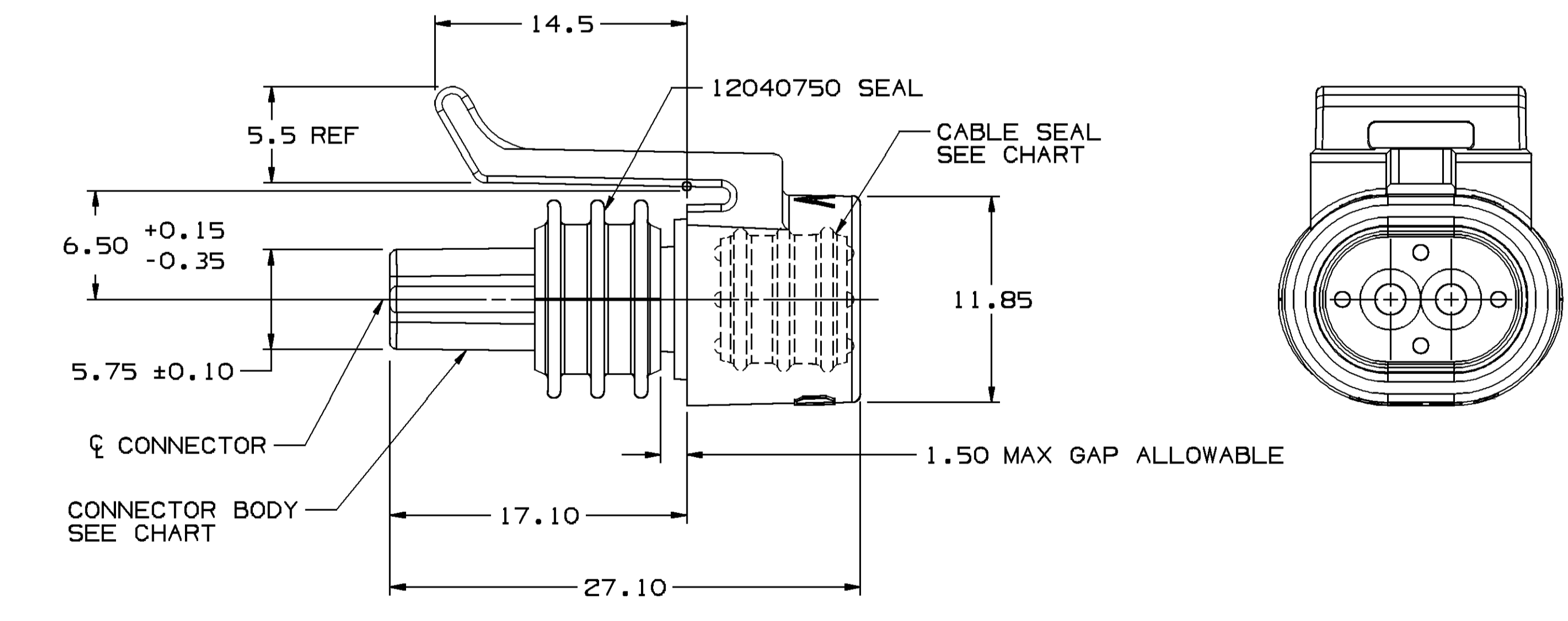
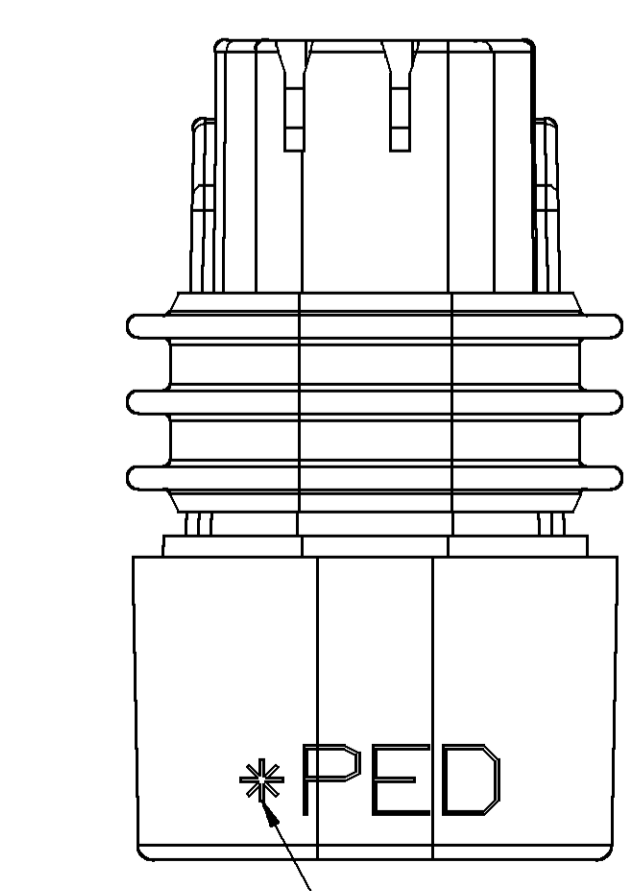
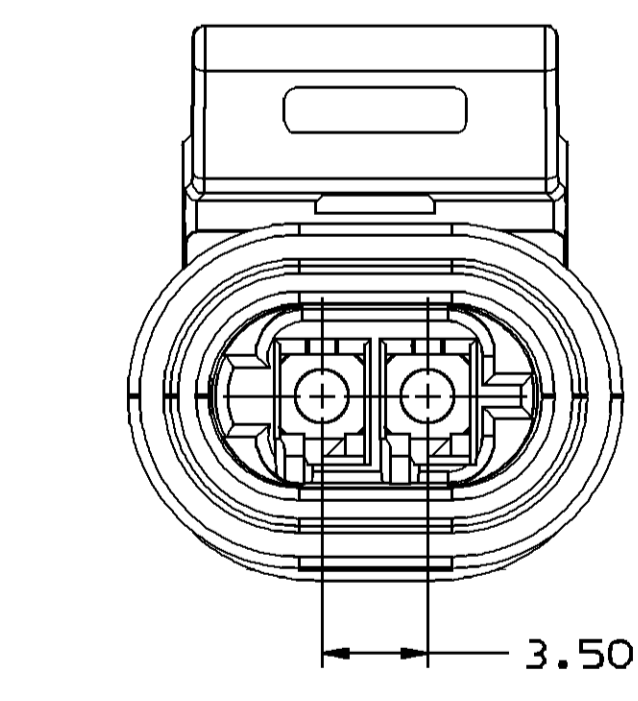
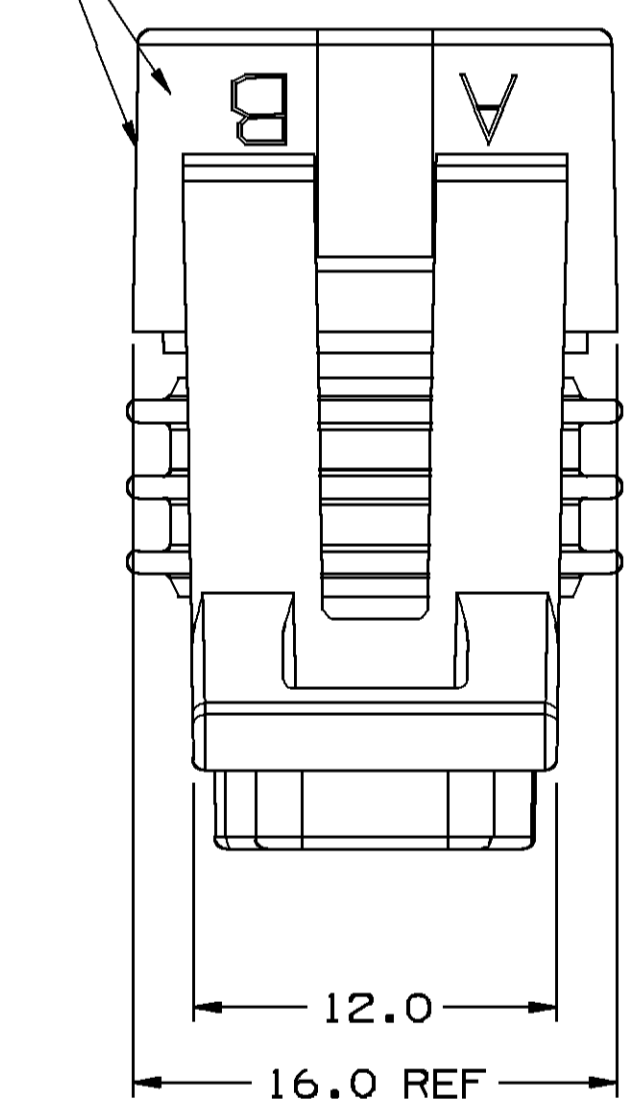


**SECTION A-A**



**SECTION B-B**

DRAFT IN EITHER DIRECTION PERMISSIBLE ON THESE SURFACES



**MATING CONNECTOR INFORMATION**

- NOTES:**
- UNLESS OTHERWISE SPECIFIED AND/OR INDICATED: DIMENSIONS ARE TO FACE OF VIEW SHOWN AND AUTOMATICALLY ROUNDED BY COMPUTER FOR INSPECTION. (SEE MATH MODEL FOR PRECISE DIMENSION) FOR ALL OTHER DIMENSIONS NOT SHOWN BUT REQUIRED FOR TOOL BUILD, SEE MATH MODEL FOR PRECISE TOOL PATH DATA. CAVITIES ARE IDENTICAL.
  - MATING COMPONENTS: CONNECTOR 12041409 OR EQUIVALENT TERMINAL 12124075 OR EQUIVALENT
  - WHEN PARTS ARE SHIPPED, THEY MUST BE PACKED IN PLASTIC BAGS OR SHIPPING CONTAINERS MUST BE LINED WITH PLASTIC LINERS BAGS OR LINERS MUST BE SEALED TO AVOID ENTRY OF FOREIGN MATTER
  - FOR LEAD LENGTH CALCULATIONS, DISTANCE FROM MATING END OF CONNECTOR TO FRONT OF CABLE CORE IS 8.60 ±1.55
  - SEALING CODE 3
  - DESIGN WILL PASS SALT FOG AND IMMERSION TEST AFTER CONDITIONING AS SPECIFIED IN ESA-644 (WEATHER-PACK) ESA-710 (METRI-PACK) ESA-650 (UNDERHOOD MICRO-PACK) C-4006 (WORLD CONNECTOR) ETC. - WHEN MATED TO MATING PART OR EQUIVALENT
  - DIMENSIONS MARKED "REF" ARE FOR REFERENCE ONLY AND NO TOLERANCE LIMITS ARE ESTABLISHED
  - S-60-T LUBEWELL LUBRICANT CAN BE USED AS AN AUXILIARY SUPPORT ON THE CABLE INSTALLATION PROCESS.

15326143	AI	15326141	BLACK	12040750	BLUE	12040751	GREEN
12162199	AI	12162196	MD GRAY	12040750	BLUE	12110169	LT ORN
12162198	AI	12162196	MD GRAY	12040750	BLUE	12078083	TAN
12162197	AI	12162196	MD GRAY	12040750	BLUE	12040751	GREEN
ASM	REV	PART NO	COLOR	PART NO	COLOR	PART NO	COLOR
		CONNECTOR		CONNECTOR SEAL		CABLE SEAL	

**SNOWCONE CHARACTERISTICS**

TOTAL ON DRAWING	4
LAST NO. USED	4

"O" DENOTES DIMENSIONS AND CHARACTERISTICS THAT ARE IMPORTANT TO THE FUNCTION AND/OR PROCESSING OF THE PART THAT HAVE SPECIAL ACCEPTANCE CRITERIA FOR PRODUCTION APPROVAL.

DATE	SYM	REVISION RECORD	AUTH	DR	CK
05AP97		ALL PARTS - REVISED			
		- NO REV UPDATE REQ'D	178177	JH/PKY	
05AP97		15326143 - RELEASED TO			
		REV "A"	970005	JH/PKY	
03JA14		ALL PARTS - ADDED			
		LUBEWELL LUBRICANT NOTE	424986	JVR/KRM	

PART NO  
1216 2265

PART NO  
1216 2265

DESIGNING TYPE <b>PID</b>	OTHER DRAWINGS AVAILABLE
<b>Utrecht II</b>	<b>METRIC</b> DIMENSIONS ARE IN MILLIMETERS UNLESS OTHERWISE SPECIFIED
THIRD ANGLE PROJECTION	TOLERANCE UNLESS OTHERWISE SPECIFIED DECIMAL ANGULAR ± 2°
CODE NO 6900	QC -C-5110
DWG DATE 07FE94	DR E. BEILSTEIN 07FE94
SCALE 4:1	CK E. BEILSTEIN 07FE94
REFERENCE NO	APP S.J. VUKMER 15FE94
MATERIAL SPEC	VOL CM³
SEE DRAWING	
NAME TAXI ASM CONN 2F M/P 150.2 P25	
PART NUMBER 1216 2265	SIZE A0

DELPHI PACKARD ELECTRIC SYSTEMS  
WARREN, OHIO 44090

151 P. 5096  
Date: 15-Jan-14 Time: 15:12