

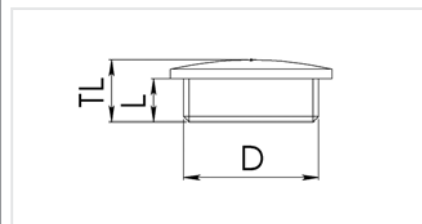
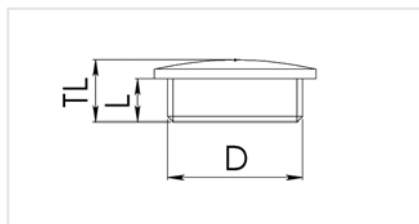
## Threaded Plugs – Polyamide (PA)

### Metric Thread

### PG Thread



Material Specifications							
Threaded Plug	Polyamide (PA)			Polyamide (PA)			
Seal Ring	Order separately (See Page 298)			Order separately (See Page 300)			
Temperature Range							
Threaded Plug	-20 to 100°C (-4 to 212°F)			-20 to 100°C (-4 to 212°F)			
Color	Light Gray & Black			Light Gray			
		<b>Cat. No.</b>	<b>Std.</b>			<b>Std.</b>	
	<b>Size</b>	<b>Light Gray</b>	<b>Black</b>	<b>Pk.</b>	<b>Size</b>	<b>Cat. No.</b>	<b>Pk.</b>
	M12x1.5	25550.9	25540.9	100	PG7	23140.9	100
	M16x1.5	25551.9	25541.9	100	PG9	23141.9	100
	M20x1.5	25552.9	25542.9	100	PG11	23142.9	100
	M25x1.5	25553.9	25543.9	100	PG13.5	23143.9	100
	M32x1.5	25554.9	25544.9	50	PG16	23144.9	100
	M40x1.5	25555.9	25545.9	50	PG21	23145.9	100
	M50x1.5	25556.9	25546.9	50	PG29	23146.9	100
	M63x1.5	25557.9	25547.9	50	PG36	23147.9	25
					PG42	23148.9	25
					PG48	23149.9	25



#### Dimensions: mm (in.)

Size D	L	TL	Size D	L	TL
M12x1.5	6.0 (.24)	15.0 (.59)	PG7	6.0 (.24)	15.0 (.59)
M16x1.5	6.0 (.24)	20.0 (.79)	PG9	6.3 (.25)	20.0 (.79)
M20x1.5	6.0 (.24)	24.0 (.94)	PG11	6.3 (.25)	22.0 (.87)
M25x1.5	8.0 (.31)	30.0 (1.18)	PG13.5	6.3 (.25)	25.0 (1.00)
M32x1.5	8.0 (.31)	37.0 (1.46)	PG16	6.3 (.25)	27.0 (1.06)
M40x1.5	8.0 (.31)	46.0 (1.81)	PG21	8.3 (.33)	33.5 (1.32)
M50x1.5	10.0 (.39)	56.0 (2.20)	PG29	8.3 (.33)	44.0 (1.73)
M63x1.5	12.0 (.63)	70.0 (2.76)	PG36	10.0 (.39)	55.0 (2.17)
			PG42	10.0 (.39)	62.0 (2.44)
			PG48	12.0 (.47)	69.0 (2.72)