

DO NOT SCALE

THIS DRAWING AND DESIGN HEREON CONSTITUTES A PROPRIETARY DESIGN OF PACKARD ELECTRIC DIVISION AND IS NOT TO BE DUPLICATED, OR REPRODUCED WITHOUT AUTHORITY OF PACKARD ELECTRIC DIVISION

1. THIS PART ACCEPTS THE FOLLOWING COMPONENTS OR EQUIVALENT: TERMINAL 12124502
2. MATERIAL RECYCLING CODE PER ISO 11469, (.090) X (.004) RAISED CHARACTERS AS SHOWN TO BE LOCATED ON ANY EXTERIOR SURFACE. OPTIONAL CONSTRUCTION TO BE NO MATERIAL RECYCLING CODE.
3. (.090) X (.004) RAISED DELPHI CORPORATE BRAND TO BE LOCATED ON ANY EXTERIOR SURFACE, PREFERABLY VISIBLE AT FINAL ASSEMBLY. OPTIONAL CONSTRUCTION TO BE "PED" OR NO LOGO.

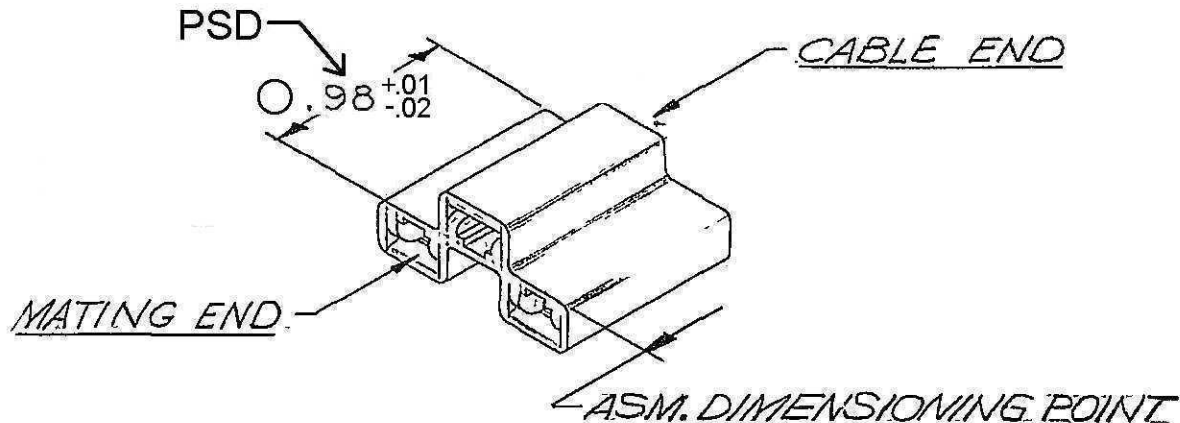
PART NO.

2965114

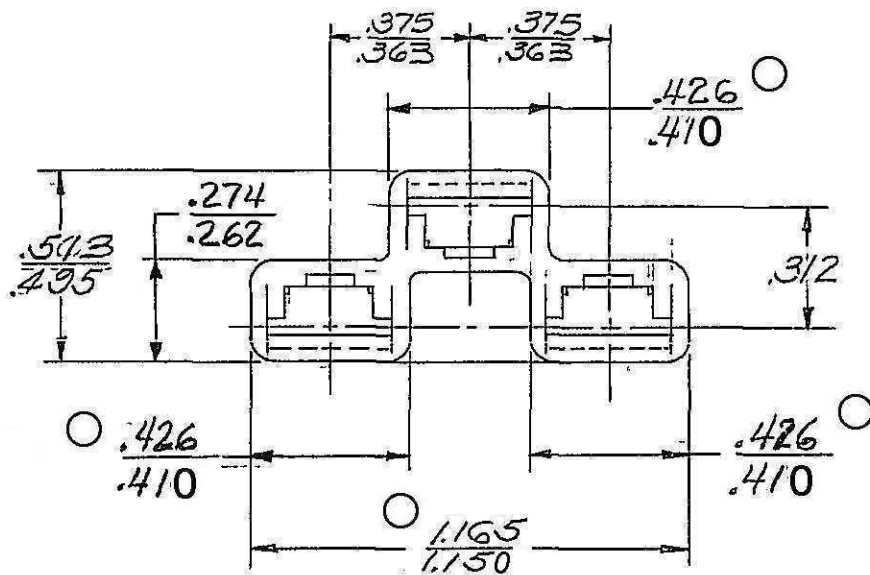
SIZE

A

DATE	SYM	REVISION RECORD	C/N.NO.
4-28-67	G	REDRAWN FROM "C" SIZE DETAIL DWG	27883
4-19-73	S	MATL. SPEC. REVISED	99146
27JN85	-	REVISED DIMS (8 PLCS)	99440
04AU05	G1	UPDATED MAT'L SPEC, ADDED PSD AND ADDED NOTES 1,2 & 3	270107
07AP06	G2	REVISED TOLS (5 PLCS)	279445



C02D1505



CODE NO. **6900**
 TOLERANCE UNLESS OTHERWISE SPECIFIED
 DECIMAL 2 PLC ±.01
 FRACTIONAL 3 PLC ±.005
 ANGULAR

DWG. DATE 3-23-56 SCALE **NONE** DR. **L. SUVERISON**
 ROUTING CK. *D. Shiry* 6-12-67
 DEPT. APPR.
 OUTST. APPR.
 REFERENCE WAS EX-10295 APPR.
629.4314 "D" SIZE APPR. *Rubert* 6-12-67

MATERIAL SPEC. CODE NO.
M0592001 ABS HI IM BLK

NAME
**CONN. BODY - 56 SERIES
 3 FEMALE TERMINALS**

PART NO. **2965114** SIZE **A**
OUTLINE DRAWING

PACKARD ELECTRIC DIVISION
 GENERAL MOTORS CORPORATION
 WARREN, OHIO
 1074K
 3748
 04
 11
 FEB-A
 OV-A
 HR-A
 OSH-A
 DR-V
 DRD-V
 TR-V
 CHEV-A
 2274R
 PCTR
 99
 BR, 7AR
 001
 00R
 02R
 DP-A