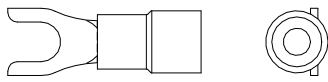
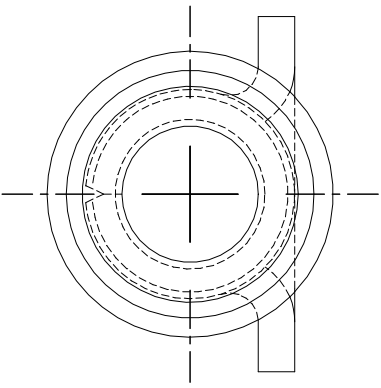
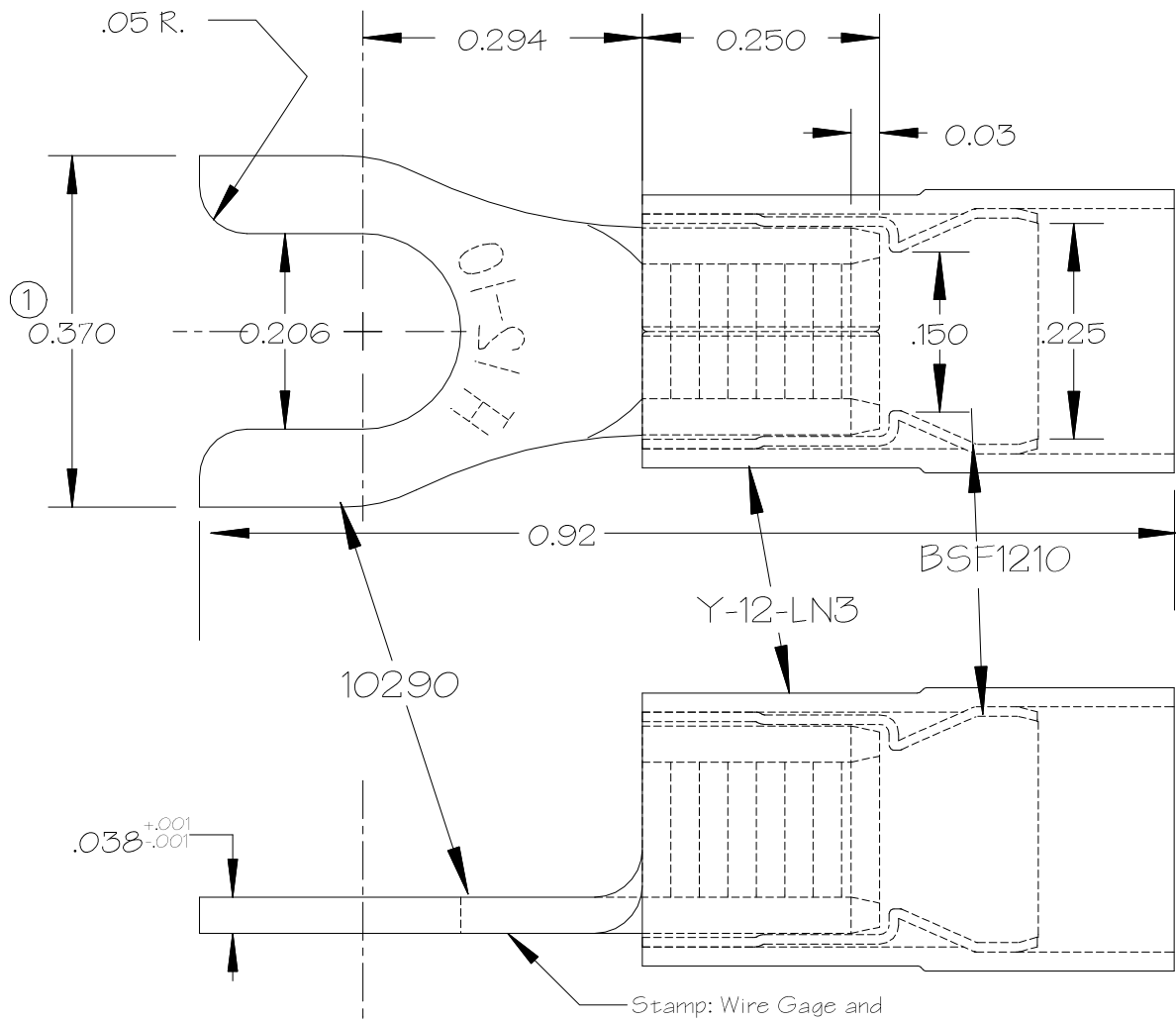


Num	Date	By	Revision Note
1	07/01/04	jrc	was .350



Actual Size

Notes:

- Material: ETP Alloy 110 Copper 1/2 Hard Temper  
ASTM Spec B152
- Sleeve Material: Brass .010 Thick  
Finish: Tin Plated
- Insulator Material: Nylon Type 6/6  
Color: Yellow  
Wall Stock: .020
- Finish: Flash Electro Tin Plate  
ASTM Spec B545  
Mil Spec: Mil-T-10727C Type I  
.0001-.00025 Thick

Stamp: Wire Gage and  
Logo this area

NOTES

- DO NOT SCALE PRINT.
- BREAK ALL NON-CUTTING EDGES.
- STAMP OR ETCH HTT,  
DET NO., MAT'L, & HEAT TREAT
- GRIND AS SHOWN.

<b>TOLERANCES</b>		<b>H Hillsdale Terminal</b>		250 Industrial Drive 2222 W. Moore Rd. Hillsdale, Michigan 49242	
UNLESS OTHERWISE SPECIFIED		Title Nylon 3-PC 12-10 GA. #10 Stud Spade			
.XXX	+/- .010	DRAWN BY J. Condon		DATE 09/28/96	
.XX	+/- .020	CHECKED BY		SCALE 5X	
.X	+/- .030	DIE NUMBER D-12		CAD DRAWING # 30290	
FRACTIONS	+/- 1/32	SHEET SIZE A		MATERIAL See Notes	
ANGLES	+/- 0°30'				