

PLEASE CHECK WWW.MOLEX.COM FOR LATEST PART INFORMATION

Part Number: **0430200200**
Status: **Active**
Overview: Micro-Fit Connector System
Description: Micro-Fit 3.0 Plug Housing, Dual Row, 2 Circuits, UL 94V-0, Panel Mount Ears, Low-Halogen, Black

Documents:

Drawing (PDF)	Test Summary 430450005-TS-000 (PDF)
3D Model	Test Summary TS-43045-001-001 (PDF)
3D Model (PDF)	Test Summary TS-43045-003-001 (PDF)
Product Specification 430450001-PS-KO-000 (PDF)	Test Summary TS-46235-001-001 (PDF)
Product Specification 430450001-PS-SP-000 (PDF)	Datasheet (PDF)
Product Specification PS-43045-001 (PDF)	RoHS Certificate of Compliance (PDF)
Packaging Specification PK-43020-001-001 (PDF)	

Agency Certification

CSA	LR19980
UL	E29179

General

Product Family	Crimp Housings
Series	<u>43020</u>
Application	Power, Wire-to-Wire
Overview	<u>Micro-Fit Connector System</u>
Product Name	Micro-Fit 3.0
UPC	800754383264

Physical

Circuits (maximum)	2
Color - Resin	Black
Flammability	94V-0
Gender	Plug
Glow-Wire Capable	No
Keying to Mating Part	None
Lock to Mating Part	Yes
Material - Resin	Nylon
Net Weight	0.456/g
Number of Rows	2
Packaging Type	Bag
Panel Mount	Yes
Pitch - Mating Interface	3.00mm
Pitch - Termination Interface	3.00mm
Polarized to Mating Part	Yes
Stackable	No
Temperature Range - Operating	-40° to +105°C

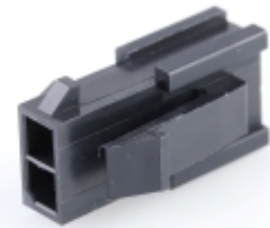
Solder Process Data

Lead-freeProcess Capability	N/A
-----------------------------	-----

Material Info

Reference - Drawing Numbers

Packaging Specification	PK-43020-001-001
Product Specification	430450001-PS-KO-000, 430450001-PS-SP-000, PS-43045-001
Sales Drawing	SDA-43020-XXXX
Test Summary	430450005-TS-000, TS-43045-001-001, TS-43045-003-001, TS-46235-001-001



Series image - Reference only

EU ELV

Not Relevant

EU RoHS

Compliant

REACH SVHC

Not Contained Per -
D(2020)9139-DC (19
Jan 2021)

Halogen-Free

Status

Low-Halogen

For more information, please visit [Contact US](#)

China ROHS

ELV

RoHS Phthalates

China RoHS

Green Image

Not Relevant

Not Contained

Search Parts in this Series

43020 Series

Mates With

Micro-Fit 3.0 Receptacle Housings 43025

Micro-Fit 3.0 Cable Assembly 245132 ,
214755 , 214756

Use With

Micro-Fit 3.0 Crimp Terminals 43031

Micro-Fit 3.0 Pre-Crimped Lead 214762 ,
214763

This document was generated on 06/25/2021

PLEASE CHECK WWW.MOLEX.COM FOR LATEST PART INFORMATION