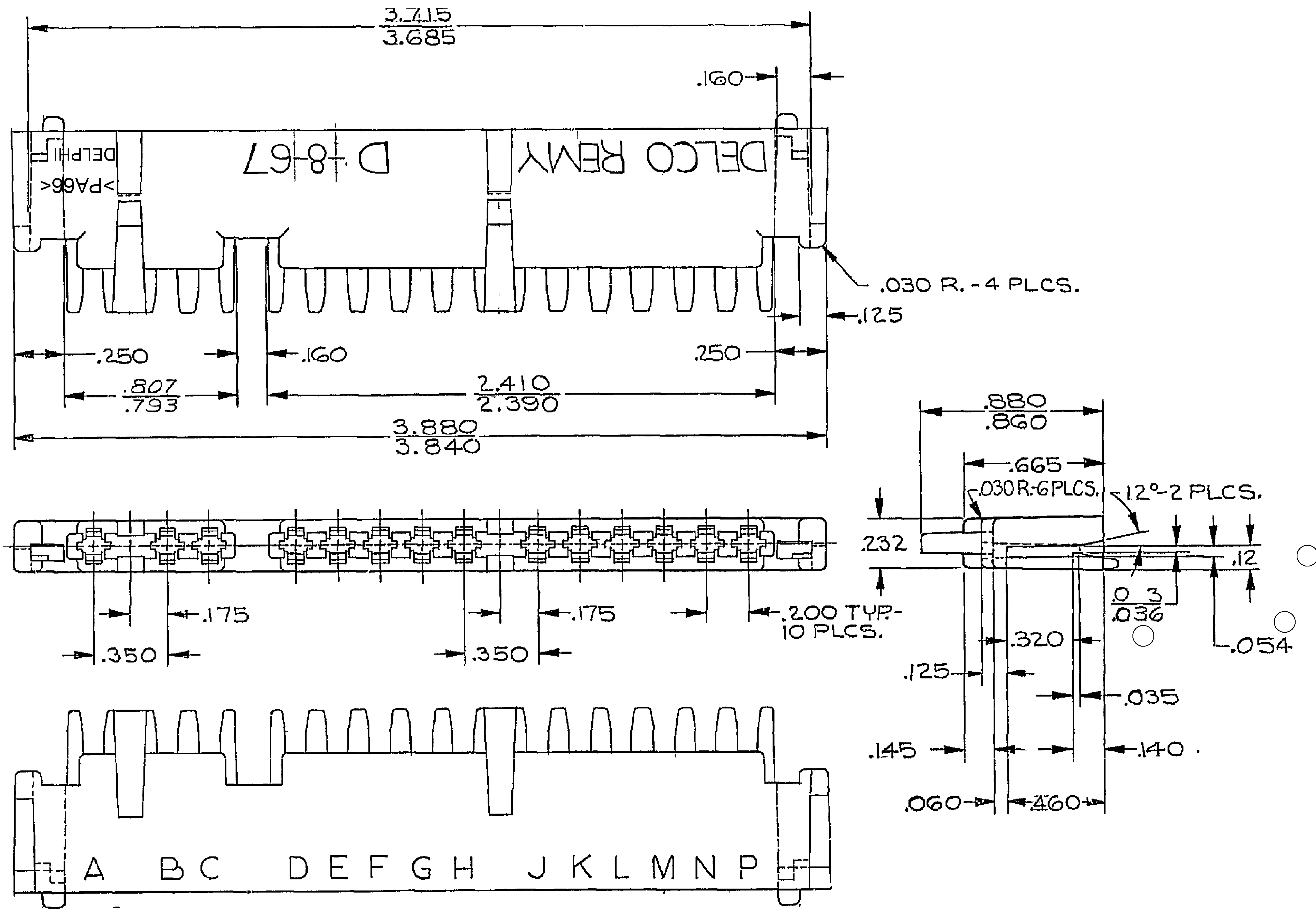


DWG STATUS				REVISION HISTORY				AUTH		DR		AP/VD	
DATE	STG	REV	W/P	CHG	ZONE								
08M103	R	11	AA	-		CLEARED REV COL & ADDED TOLERANCE CHART	240887	RAD	CMZ	60			
01FE06	R	11	AB	-		.12 +/- .005/- .009 WAS .12 +/- .005, .023/.036 WAS .030/.036 AND .054 +/- .005/- .010 WAS .054 +/- .005	277012	RTV	JAA	EST	M		



- NOTES
- REFERENCE MATING COMPONENTS OR EQUIVALENT:  
CONNECTOR 06294509 & 06294510
  - (.090)X(.004) RAISED DELPHI CORPORATE BRAND TO BE LOCATED ON ANY EXTERIOR SURFACE, PREFERABLY VISIBLE AT FINAL ASSEMBLY.  
OPTIONAL CONSTRUCTION TO BE "PED" OR NO LOGO.
  - MATERIAL RECYCLING CODE PER ISO 11469. (.090)X(.004) RAISED CHARACTERS AS SHOWN TO BE LOCATED ON ANY EXTERIOR SURFACE.  
OPTIONAL CONSTRUCTION TO BE NO MATERIAL RECYCLING CODE.

DWG TYPE		PART DRAWING	
STYLE		DISTR CODE	D
VOLUME (OF)			
UNLESS OTHERWISE SPECIFIED			
THIS DOCUMENT IS IN ACCORDANCE WITH ASME Y14.5M-1994 AS SUPPLEMENTED BY THE IN CHARGE OF REVISIONS AND TOLERANCE ASSIGNMENT (TAP). ALL DIMENSIONS UNLESS OTHERWISE SPECIFIED ARE IN INCHES. DIMENSIONS NOT SPECIFIED ARE TO BE RELATED TO THE DATUM REFERENCE POINT UNLESS OTHERWISE SPECIFIED. DIMENSIONS NOT SPECIFIED ARE TO BE RELATED TO THE DATUM REFERENCE POINT UNLESS OTHERWISE SPECIFIED. DIMENSIONS NOT SPECIFIED ARE TO BE RELATED TO THE DATUM REFERENCE POINT UNLESS OTHERWISE SPECIFIED.			
REFERENCE			

**DELPHI**  
DELPHI PACKARD ELECTRIC SYSTEMS  
WARREN, OH

DR	DATE
APV01 A. RUSSO	270C67
APV02 M. ISOMON	270C67
APV03	270C67
APV04	
APV05	

W3592001 P666 HS 1M BLK

DRAWING NAME  
CONN 14 M PAC/ON 1 BLK

DRAWING NUMBER  
**06294508**

SIZE: AO SCALE: NONE FRM: NO SHEET NO: 1 OF 1 REV: N/P

DIMENSIONAL RANGE (IN)	CHART #
FROM 0 TO >.750	>1.250
>.750 TO 1.250	>2.750
1.250 TO 2.000	4.000
2.000 TO 4.000	

THIRD ANGLE PROJECTION

DO NOT SCALE

USE MATH DATA

ANGULAR TOLERANCE 24°

Date: 10-Feb-06 Time: 18:58