

DO NOT SCALE

THIS DRAWING AND DESIGN HEREON CONSTITUTES A PROPRIETARY DESIGN OF PACKARD ELECTRIC DIVISION AND IS NOT TO BE DUPLICATED OR REPRODUCED WITHOUT AUTHORITY OF PACKARD ELECTRIC DIVISION

D

6294641

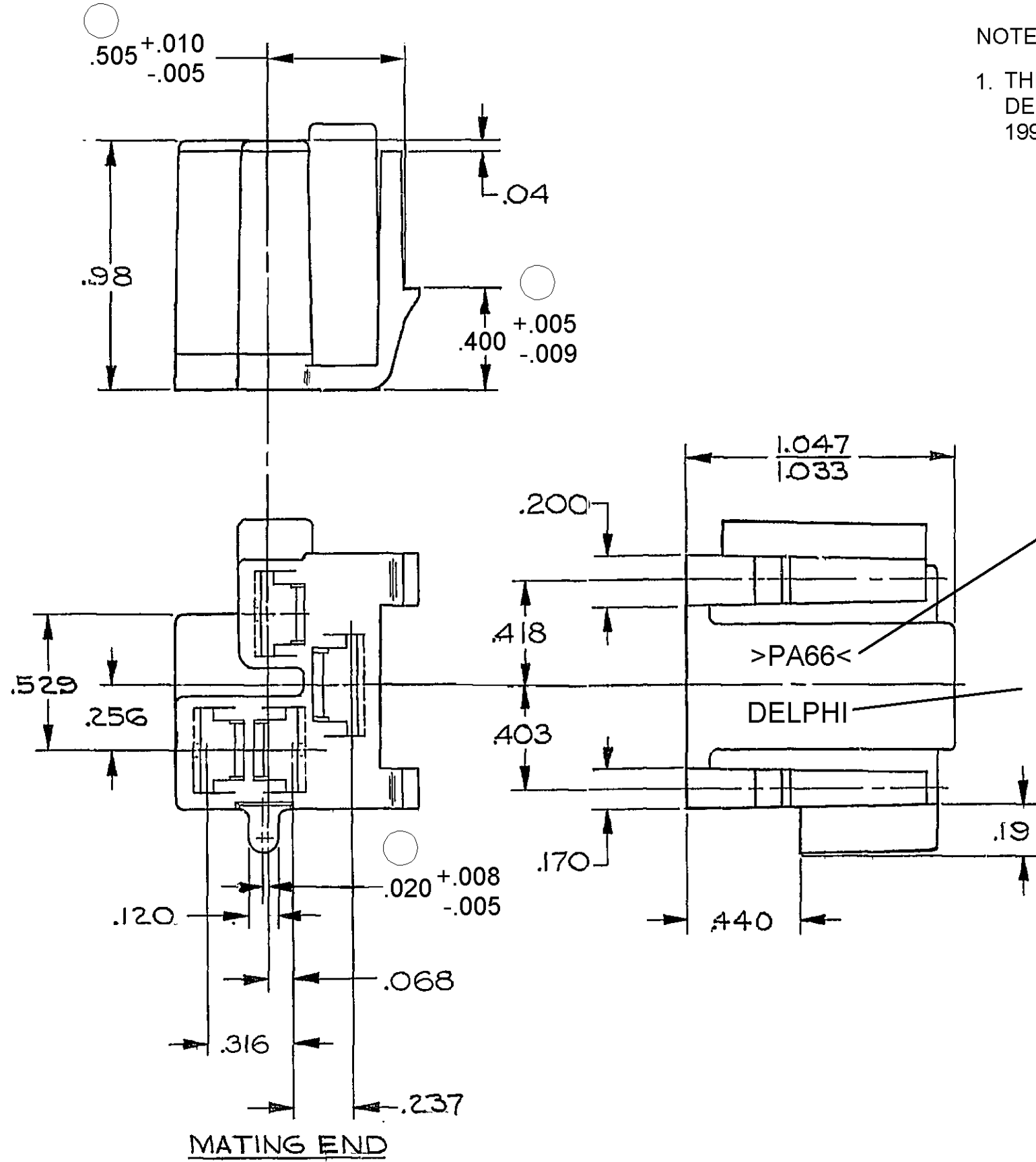
PACKARD ELECTRIC DIVISION
GENERAL MOTORS CORPORATION
WARREN, OHIO

199-P
SSG-V

CHEV-A

AM-P

19A



NOTES

1. THIS CONNECTOR MATES WITH DELCO-REMY SWITCH NOS. 1990084, 1990086, 1990087 & 1990089

RAISED CHARACTERS AS SHOWN TO BE LOCATED ON ANY EXTERIOR SURFACE. OPTIONAL CONSTRUCTION TO BE NO MATERIAL RECYCLING CODE.

RAISED DELPHI CORPORATE BRAND TO BE LOCATED ON ANY EXTERIOR SURFACE, PREFERABLY VISIBLE AT FINAL ASSEMBLY. OPTIONAL CONSTRUCTION TO BE "PED" OR NO LOGO".

C02D3746

DATE	SYM	REVISION RECORD	C/N NO.
17DE01	005	ADDED NOTES & MAT'L SPEC	
		WAS R0067547	218471
20DE05	05AA	.505 +.010 / -.005 WAS .505 +/- .005,	
		.400 +.005 / -.009 WAS .400 +/- .005	
		& .020 +.008 / -.005 WAS .020 +/- .005	275904

CODE NO. 6900	TOLERANCE UNLESS OTHERWISE SPECIFIED DECIMAL 2 PLC. $\pm .01$ 3 PLC. $\pm .005$ ANGULAR \pm
DWG. DATE 10-30-67	SCALE NONE
	DR. A. RUSSO, JR. CK <i>M. J. Dowan</i> APPR.
REFERENCE WAS EX-51381 6294641 "D" SIZE	APPR. <i>A. F.</i> APPR. <i>A. Felko</i> 2-5-68
MATERIAL SPEC. M3592001 - PA66 HS IM BLK	CODE NO.
NAME CONN 4F MXD	
PART NO. 6294641	SIZE B
OUTLINE DRAWING	