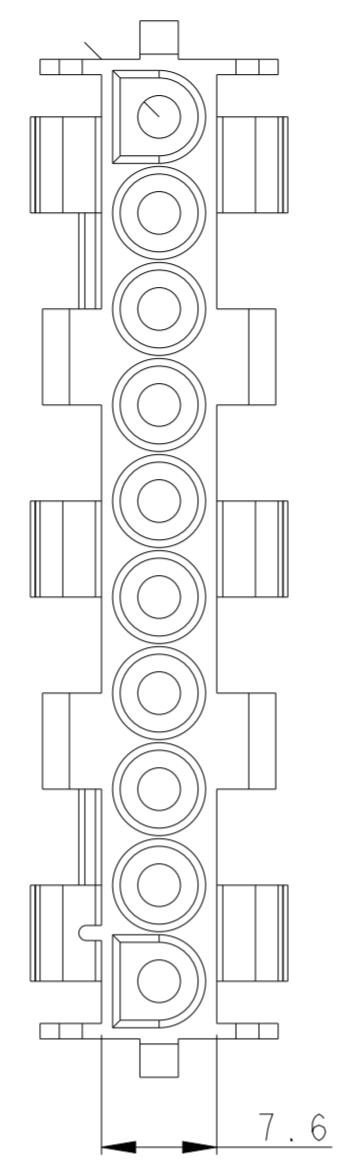
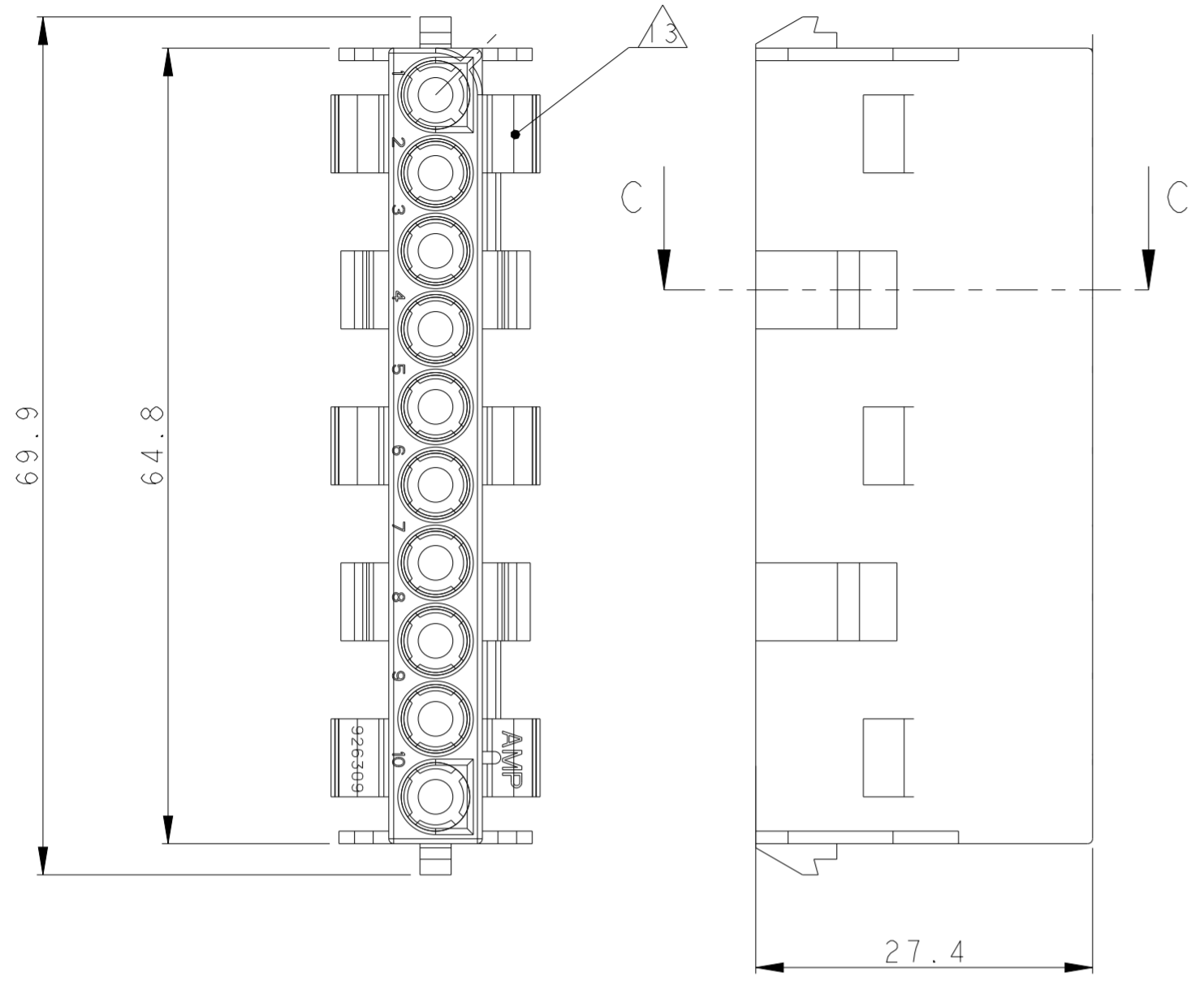


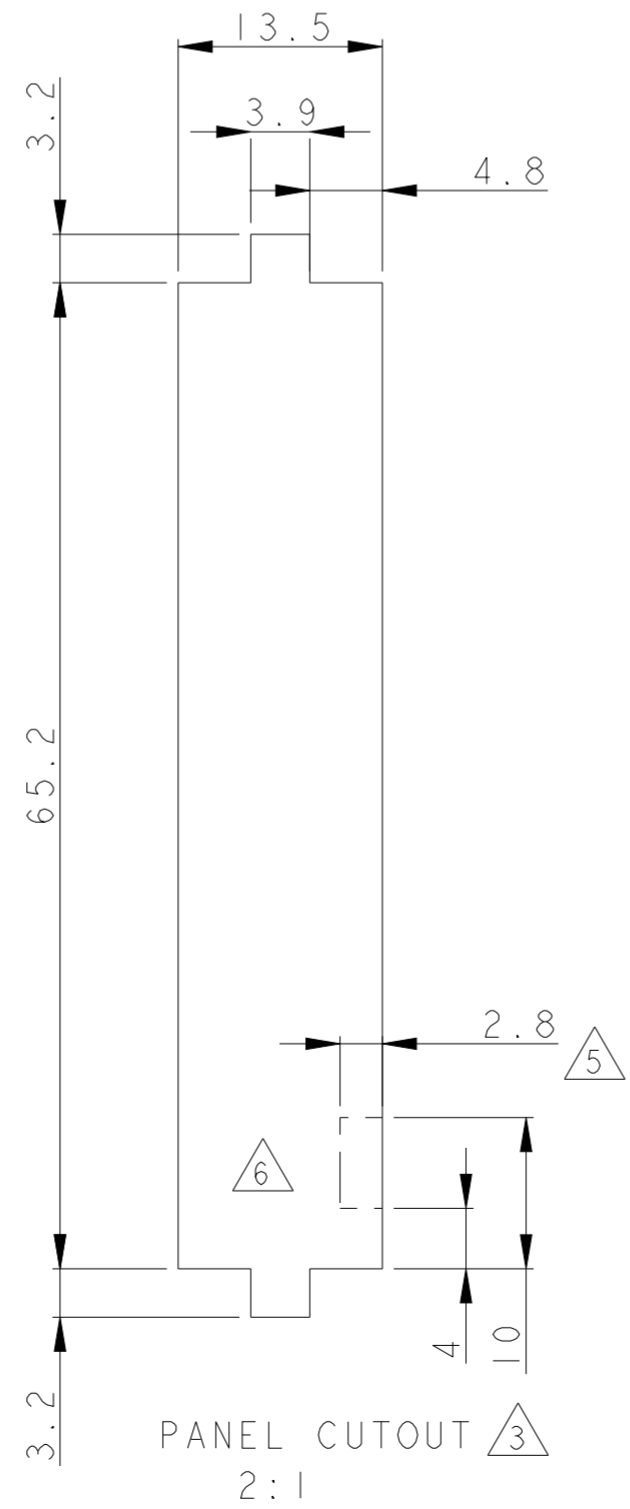
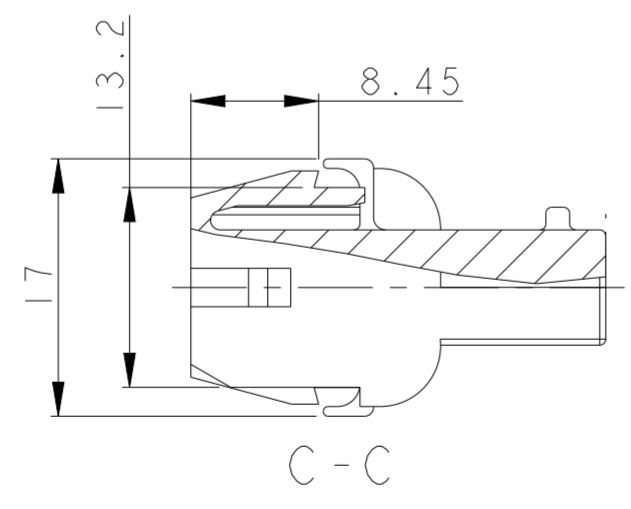
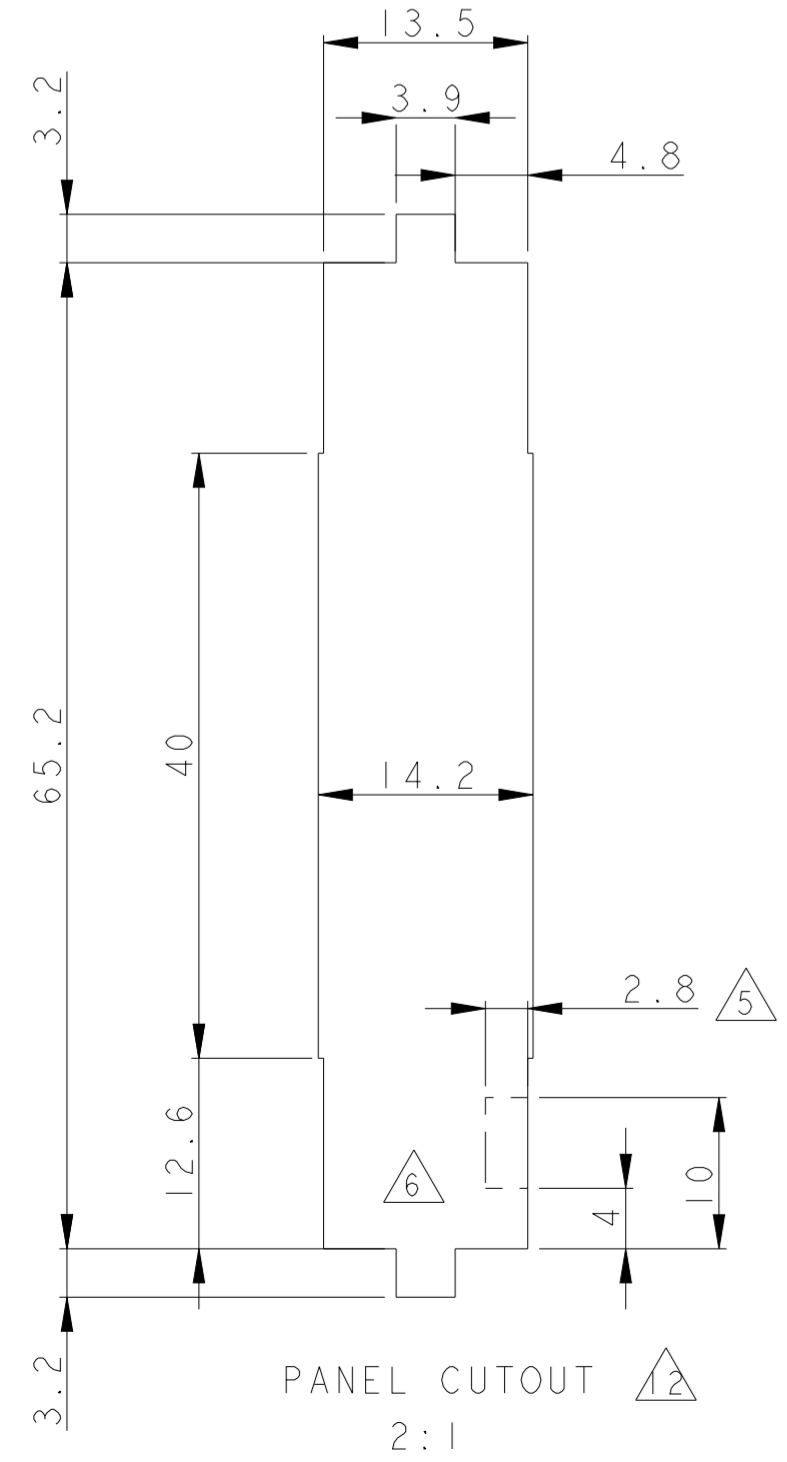
THIS DRAWING IS UNPUBLISHED. RELEASED FOR PUBLICATION
 © COPYRIGHT copyright.d8Te- ALL RIGHTS RESERVED.

REVISIONS				
P	LTR	DESCRIPTION	DATE	APVD
J3		REVISED PER ECR-17-014951	16OCT2017	BDA KR
J4		REVISED PER ECR-21-116188	05NOV2021	SS VS
K		REVISED PER ECR-21-120470	12NOV2021	SS VS



- 1 SUITABLE FOR UMNL PIN AND SOCKET CONTACTS
- 2 SUITABLE FOR UMNL PLUG HOUSING PN 926302
- 3 RECOMMENDED PLATE THICKNESS 0.75-2.3mm
- 4 HOUSING TIGHT CLOSURE ARE INTRODUCED INTO PUNCHING DIRECTION
- 5 ENCRYPTED FOR INSERTION OF THE HOUSING
- 6 POSITION OF THE CHAMBER I AT ENCRYPTED USING THE HOUSING
- 7 NEW MATERIAL (PHOSPHORUS AND HALOGEN FREE)
- 8 BULK IN BAG AND SHIPPING CARTON ON 973057-2
- 9 GLOW-WIRE TEST 750°C(WITHOUT FLAME) ACCORDING TO IEC60335-1 EDITION 6/2001
- 10 PRELIMINARY PART NOT RELEASED FOR PRODUCTION
- 11 COLOR OF HOUSINGS MAY RANGE FROM CLEAR TO GREEN OR YELLOW DUE TO HYGROSCOPIC NATURE OF RESIN. HOWEVER IT DOESN'T AFFECT THE FORM. FIT AND FUNCTION OF THE PRODUCT.
- 12 ADD PANEL CUTOUT ONLY FOR LASER CUT PROCESS.
- 13 CSA CERTIFICATION LOGO LOCATED APPROXIMATELY AS SHOWN.
- 14 DIMENSIONS SHOWN REPRESENT PRODUCT IN DRY, AS MOLDED, CONDITION. ADDITIONAL 2% GROWTH DUE TO SUBSEQUENT MOISTURE ABSORPTION MAY OCCUR AND SHOULD BE ACCOUNTED FOR.

PANEL CUTOUT ONLY USE FOR LASER PROCESS



OBSOLETE	COLOUR	MATERIAL	TEST	PART NUMBER
	NATURAL	PA66 UL94-V0 GWT 750 °C	9	926309-7
	NATURAL	PA6. UL94-V0	9	926309-6
	NATURAL	PA66 UL94-V2	9	926309-5
	WHITE	PA6.6 UL94-V0		926309-4
	NATURAL	VYDYNE ECO315J	7	926309-3
	BLACK	PA6.6 UL94-V0		926309-2
	NATURAL	PA66 UL94-V2	11	926309-1

THIS DRAWING IS A CONTROLLED DOCUMENT.

DWN MGT	11DEC2012	TE Connectivity
CHK R.P	11DEC2012	
APVD R.P	11DEC2012	
DIMENSIONS: mm TOLERANCES UNLESS OTHERWISE SPECIFIED: 0 PLC ±0.2 1 PLC ±0.2 2 PLC ±0.2 3 PLC ± 4 PLC ± ANGLES ± FINISH -		NAME: UMNL 10 WAY CAP HOUSING SIZE: A2 CAGE CODE: C-926309 DRAWING NO: C-926309 RESTRICTED TO: - SCALE: 1:1 SHEET: 1 OF 1 REV: K
MATERIAL REFER TABLE	-	CUSTOMER DRAWING