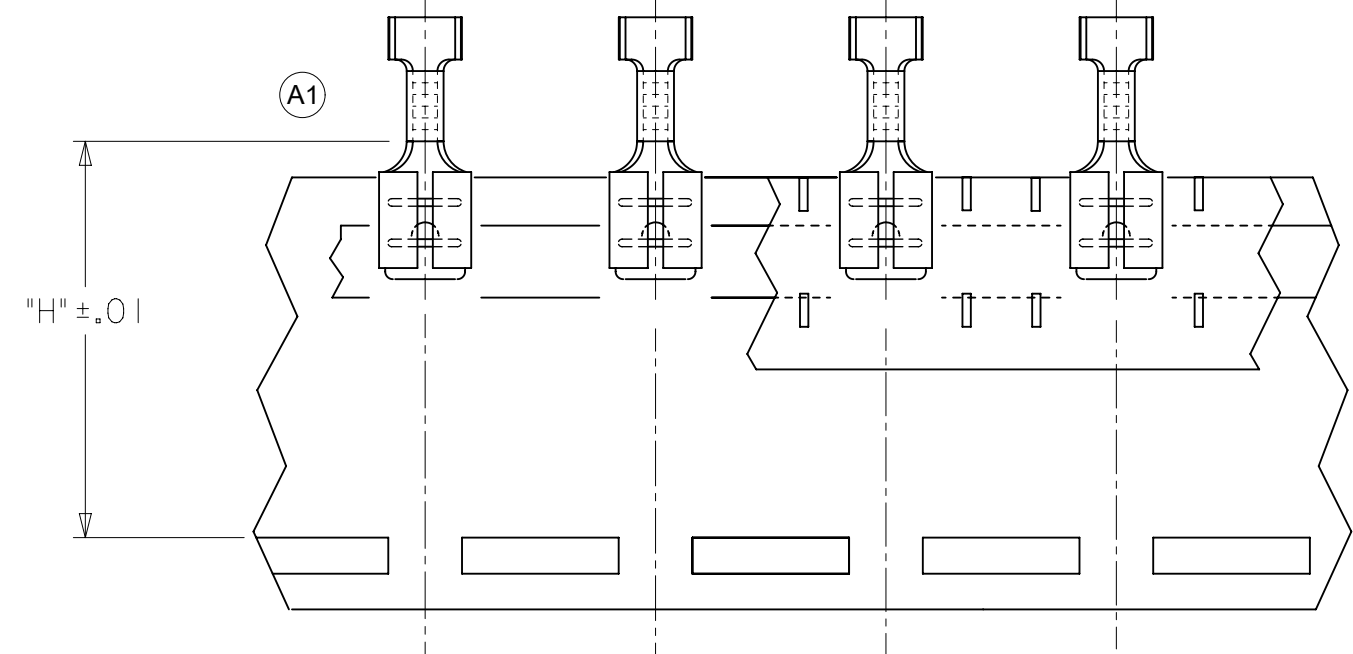
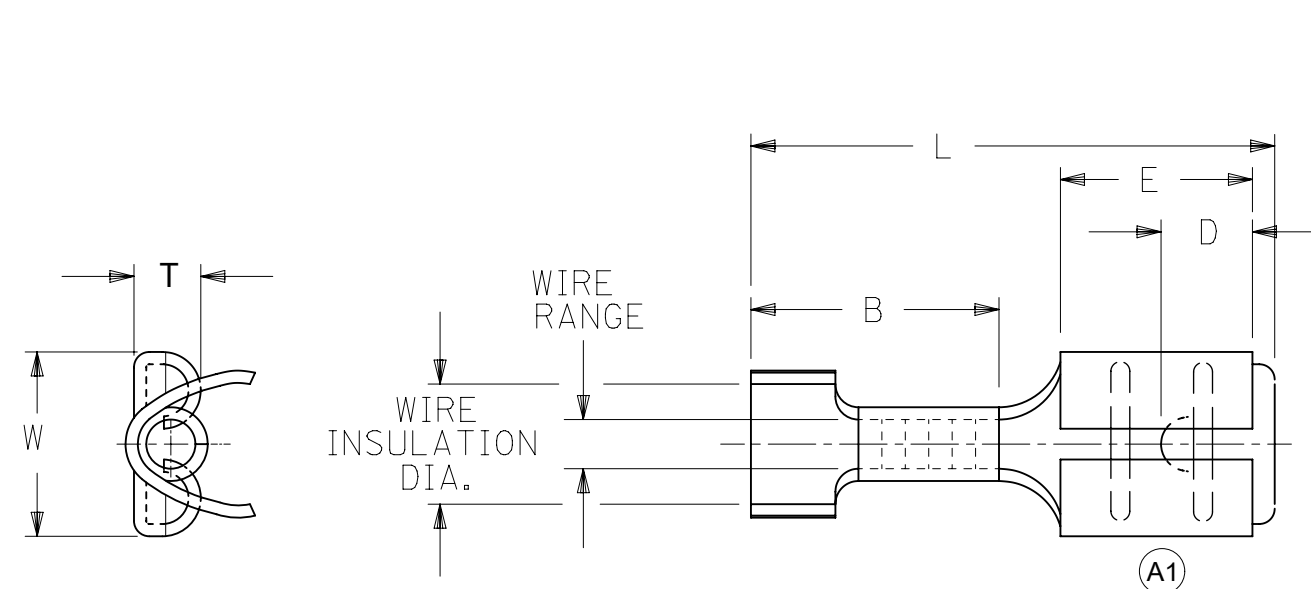


MATERIAL NO. LOOSE PIECE	ENGINEERING P/N LOOSE PIECE	MATERIAL NO. TAPE MOUNTED	ENGINEERING P/N TAPE MOUNTED	WIRE RANGE AWG	FITS TAB SIZE	STOCK THICK.	L ±.032	B ±.016	W ±.016	D ±.01	T ±.016	E ±.016	H NOMINAL	WIRE INSULATION DIAMETER REF.
190180044	M-4172	190180047	M-4172T	26-24	.187x.020 (4.75x0.51)	.016 (0.41)	.660 (16.76)	.315 (8.00)	.231 (5.87)	.12 (3.0)	.088 (2.24)	.250 (6.35)	.98 (24.9)	.040-.095 (1.02-2.41)
190180001	AA-4173	190180004	AA-4173T	22-18	.187x.020 (4.75x0.51)	.016 (0.41)	.692 (17.58)	.350 (8.89)	.231 (5.87)	.12 (3.0)	.088 (2.24)	.250 (6.35)	.98 (24.9)	.060-.125 (1.52-3.18)
190180011	BB-4174	190180013	BB-4174T	16-14	.187x.020 (4.75x0.51)	.016 (0.41)	.692 (17.58)	.350 (8.89)	.231 (5.87)	.12 (3.0)	.088 (2.24)	.250 (6.35)	.98 (24.9)	.085-.145 (2.16-3.68)
190180021	P-4175	190180055	P-4175T	14-12	.187x.020 (4.75x0.51)	.016 (0.41)	.692 (17.58)	.350 (8.89)	.231 (5.87)	.12 (3.0)	.088 (2.24)	.250 (6.35)	.98 (24.9)	.100-.175 (2.54-4.45)
190180045	M-4172-032	190180046	M-4172-032T	26-24	.187x.032 (4.75x0.81)	.016 (0.41)	.660 (16.76)	.315 (8.00)	.231 (5.87)	.12 (3.0)	.094 (2.39)	.250 (6.35)	.98 (24.9)	.040-.095 (1.02-2.41)
190180002	AA-4173-032	190180003	AA-4173-032T	22-18	.187x.032 (4.75x0.81)	.016 (0.41)	.692 (17.58)	.350 (8.89)	.231 (5.87)	.12 (3.0)	.094 (2.39)	.250 (6.35)	.98 (24.9)	.060-.125 (1.52-3.18)
190180012	BB-4174-032	190180036	BB-4174-032T	16-14	.187x.032 (4.75x0.81)	.016 (0.41)	.692 (17.58)	.350 (8.89)	.231 (5.87)	.12 (3.0)	.094 (2.39)	.250 (6.35)	.98 (24.9)	.085-.145 (2.16-3.68)
190180022	P-4175-032	190180023	P-4175-032T	14-12	.187x.032 (4.75x0.81)	.016 (0.41)	.692 (17.58)	.350 (8.89)	.231 (5.87)	.12 (3.0)	.094 (2.39)	.250 (6.35)	.98 (24.9)	.100-.175 (2.54-4.45)



**TAPE-MOUNTED PARTS**

**NOTES:**

1. MATERIAL: BRASS
2. PLATING: TIN
3. STYLE OF PART IS "VIBRAKRIMP" WITH CLOSED ELECTRICAL BARREL AND OPEN VIBRATION SUPPORT.
4. PART IS RoHS COMPLIANT.

SYMBOLS	THIS DRAWING CONTAINS INFORMATION THAT IS PROPRIETARY TO MOLEX ELECTRONIC TECHNOLOGIES, LLC AND SHOULD NOT BE USED WITHOUT WRITTEN PERMISSION														
	DIMENSION UNITS		SCALE		CURRENT REV DESC: ADD (2) WINDOW CUTS										
∇ = 0	IN/MM		NTS			<b>molex</b> QUICK DISCONNECT, VIBRAKRIMP, .187 TAB CLOSED ELEC/OPEN STRAIN PRODUCT CUSTOMER DRAWING									
∇ = 0	GENERAL TOLERANCES (UNLESS SPECIFIED)														
∇ = 0		MM	INCH	EC NO: 600450											
∇ = 0	4 PLACES	±	±	DRWN: DMYRICK 2018/06/12											
∇ = 0	3 PLACES	±	±	CHK'D: JMACNEIL 2018/06/13											
∇ = 0	2 PLACES	±	±	APPR: JMACNEIL 2018/06/13											
∇ = 0	1 PLACE	±	±	INITIAL REVISION:											
∇ = 0	0 PLACES	±	±	DRWN: EMF 1992/08/21											
∇ = 0	ANGULAR TOL ± °			APPR:											
∇ = 0	DRAFT WHERE APPLICABLE MUST REMAIN WITHIN DIMENSIONS			THIRD ANGLE PROJECTION		DRAWING		SERIES		MATERIAL NUMBER		CUSTOMER		SHEET NUMBER	
∇ = 0				C-SIZE		19018		SEE CHART		GENERAL MARKET		1 OF 1			