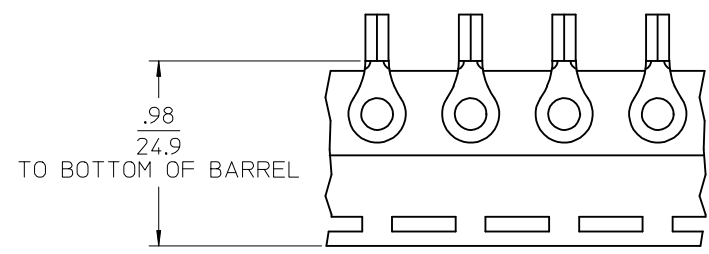
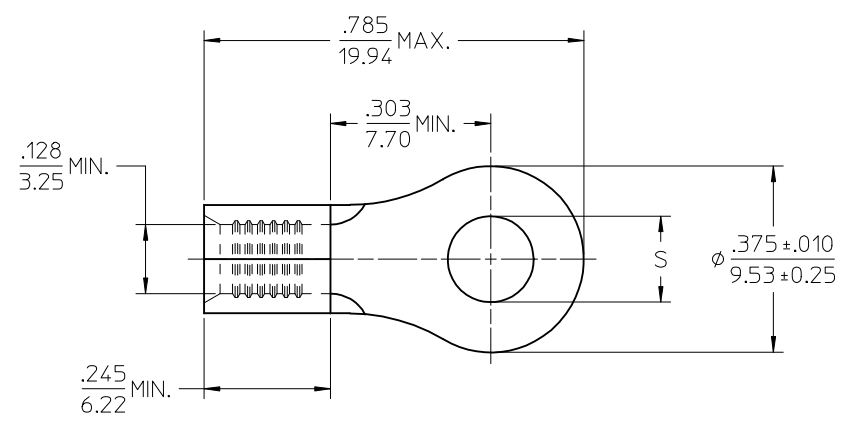


10	9	8	7	6	5	4	3	2	1
MATERIAL NO. LOOSE PIECE	ENG. NO.	MATERIAL NO. TAPE MOUNTED	ENG. NO.	STUD SIZE	"S" ±.005/0.13	STOCK THICKNESS	FINISH		
190690200	C-128-04	190690147	C-128-04T	4	(A1) .126/(3.20)	.040/(1.02)	SEE NOTE 2		
190690202	C-128-06	190690148	C-128-06T	6	.146/(3.71)				
190690205	C-128-08	190690208	C-128-08T	8	.173/(4.39)				
190690209	C-128-10	190690212	C-128-10T	10	.198/(5.03)				
190690215	C-128-209	---	---	209	.209/(5.18)				
192030159	C-U-128-06	192030111	C-U-128-06T	6	.146/(3.71)	.038/(0.97)	SEE NOTE 3		
192030160	C-U-128-08	192030112	C-U-128-08T	8	.173/(4.39)				
192030113	C-U-128-10	192030114	C-U-128-10T	10	.198/(5.03)				
190690682	C-128-10-AU	---	---	10	.198/(5.03)	.040/(1.02)	SEE NOTE 3		



SALES DRAWING

- NOTES:
1. MATERIAL: COPPER.
 2. FINISH: TIN PLATING, 100(2.5)µin(µm) MIN
 3. FINISH: GOLD, 50(1.25)µin(µm) MIN. OVER NICKEL, 50(1.25)µin(µm) MIN. PLATING.
 4. WIRE SIZE: 12-10 AWG, 4.0-6.0 MM²
 5. PARTS ARE ROHS COMPLIANT.

CORRECTED 4 STUD EC NO: IFC2017-0896 DRAWING: G01JAS01 2017/03/28 CHKD: JMACNEIL APPR: JMACNEIL 2017/03/30	QUALITY SYMBOLS	GENERAL TOLERANCES (UNLESS SPECIFIED)		DIMENSION STYLE		SCALE	DESIGN UNITS	THIRD ANGLE PROJECTION		
	▼=0 ▽=0	mm	INCH	IN/MM		---	INCH	RING TONGUE TERMINAL KRIMPTITE, 128 SERIES 12-10 AWG		
		4 PLACES ±---	±---	DRAWN BY	DATE	TITLE				
		3 PLACES ±---	±---	BDEROSS	2000/6/13	---				
2 PLACES ±---	±---	2 PLACES ±---	±---	JMACNEIL	2014/10/30	MOLEX INCORPORATED DOCUMENT NO. SD-19069-020 SHEET NO. 1 OF 1				
1 PLACE ±---	±---	1 PLACE ±---	±---	JMACNEIL	2014/11/19					
ANGULAR ±---		DRAFT WHERE APPLICABLE MUST REMAIN WITHIN DIMENSIONS		MATERIAL NO. SEE CHART		THIS DRAWING CONTAINS INFORMATION THAT IS PROPRIETARY TO MOLEX INCORPORATED AND SHOULD NOT BE USED WITHOUT WRITTEN PERMISSION				

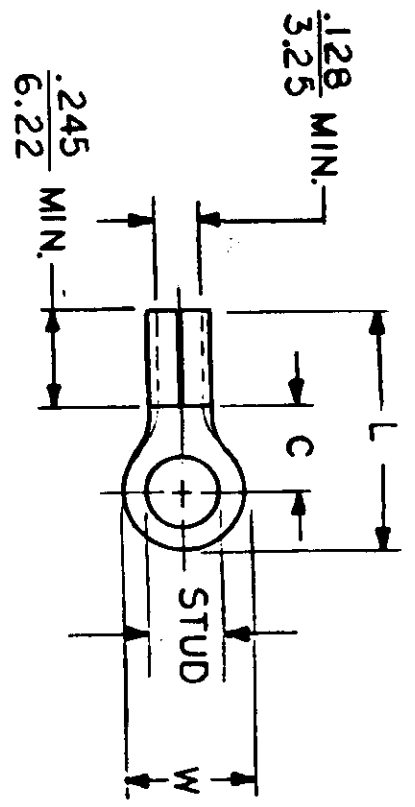
NOTES:

① MAT'L: PURE NICKEL
PLATING: NONE

STUD SIZES: ($\pm .005$)

- 02 = .094 209 = .209
- 04 = .119 413 = .413
- 06 = .146
- 08 = .173
- 10 = .198
- 14 = .265
- 56 = .328
- 38 = .390

FILE NO. C-CD-101-04



ALL DIMENSIONS = $\frac{\text{INCHES}}{\text{MM}}$

WIRE SIZE: 12-10 AWG
40-6.0 MM²

PART NUMBER	"W"	"C" MIN.	"L" MAX.	SCALE:	NTS	DATE	TITLE: TEMP. TERM (1200°)	AVAILABLE STUD SIZES	DWG. NO.	CUSTOMER DWG.
135	$\frac{.750}{19.05}$	$\frac{.611}{15.52}$	$\frac{1.280}{32.51}$	DRWN. BY: ELLIF	CHKD. BY:	2.3.87	TERMINAL RING TONGUE	14, 56, 38, 76, 12	A	
C-U-128-	$\frac{.375}{9.53}$	$\frac{.303}{7.70}$	$\frac{.785}{19.94}$	APPRD. BY:			TERMINAL RING TONGUE	04, 06, 08, 10, 209		
C-U-130-	$\frac{.530}{13.46}$	$\frac{.393}{9.98}$	$\frac{.952}{24.18}$				TERMINAL RING TONGUE	10, 14, 56, 38, 209, 413		
135	$\frac{.282}{7.16}$	$\frac{.306}{7.77}$	$\frac{.741}{18.82}$				TERMINAL RING TONGUE			
C-U-140-	$\frac{.592}{15.04}$	$\frac{.468}{11.89}$	$\frac{1.056}{26.82}$				TERMINAL RING TONGUE			
DIMENSIONAL TOLERANCES UNLESS OTHERWISE SPECIFIED								EJC molex INCORPORATED		
FRAC.	DEC.	ANG.	SCALE:	NTS	DATE	TITLE: TEMP. TERM (1200°)				
\pm	\pm	\pm	CHKD. BY:		2.3.87	TERMINAL RING TONGUE				
			APPRD. BY:			TERMINAL RING TONGUE				