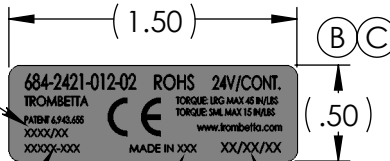


LINE LEADER INITIALS/  
LINE #

JOB #

COUNTRY  
OF ORIGIN

DATE CODE:  
MONTH/DAY/YEAR



4X R.14±.020

Ø 2.50

1.64±.040

2.80±.040

3.94±.040

3.30±.040

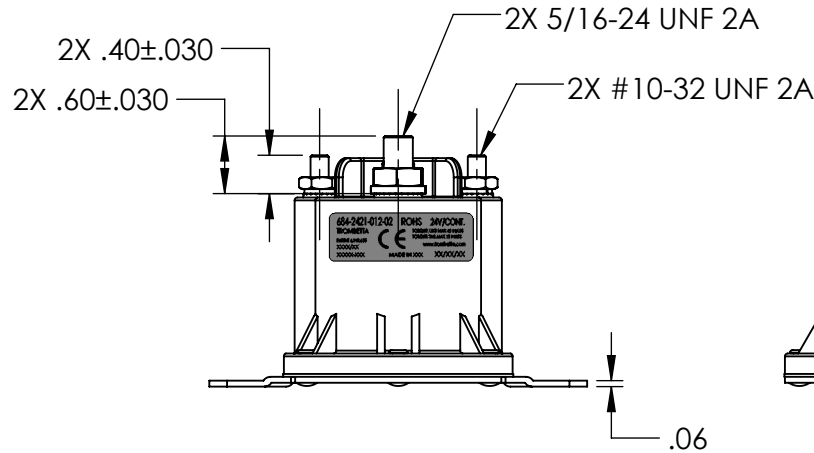
1.14±.020

2X 2.61±.050

DUTY CYCLE: CONTINUOUS DUTY  
PULL IN VOLTAGE: 16.0 VOLTS @25°C COIL TEMP  
COIL RESISTANCE: 48.0 ohms ±6% @25°C COIL TEMP  
INRUSH: 500 amps  
CARRY CURRENT: 125 amps  
ELECTRICAL LIFE: 50,000 CYCLES


NOTES:

- 1. ROHS COMPLIANT
- (B) 2. REACH COMPLIANT
- (B) 3. CONFLICT FREE COMPLIANT



C	ADDED CE SYMBOL TO LABEL GRAPHICS	CAW	7719	3/30/17	DLW
B	CHANGED TORQUE ON LABEL, WAS 35 IN/LBS, ADDED ISO & LABEL VIEWS, ADDED COMPLIANCE NOTES 2 & 3	CAW	7584	9/2/16	DAH
A	RELEASE	CAG	6143	10/30/09	DAH
REV	DESCRIPTION	BY	ECN	DATE	APP

MATERIAL	
FINISH	
UNLESS OTHERWISE SPECIFIED: BREAK ALL EDGES .005-.015 FILLETS R.010-.020 .XXX±.005 .XX±.01 ANGLES ±1° 125 FINISH	
NUMBER REVISIONS ARE PROTOTYPE	
CONTROL PLAN REQUIRED	PROJECT



DC Power Solutions for a Harsh World

## 684-2421-012-02

### DIMENSIONAL ASSEMBLY

DRAWN CAG	APP DAH	DRAWING NUMBER	REV
DATE 10/30/09	SCALE 1:2	E08786	C

5

4

3

2

1

D

D

C

C

B

B

A

A

5

4

3

2

1