

Type LPA-04 In-Line Fuse Holder 1/4" x 1/4" (6.3 x 30mm) Fuses Splashproof



www.optifuse.com

(619) 593-5050

Ratings:

Fuse Type: 1/4" x 1/4" (6.3 x 30mm or 6.3 x 32mm)

Electrical Rating: 32VDC

Body: Nylon

Contacts: Brass – Wire Gauge #14-20 AWG

Optional Lead Wire Sizes: # 18, # 20 AWG

Part number format

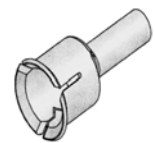
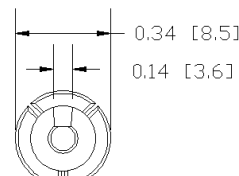
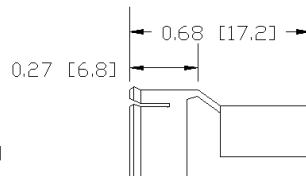
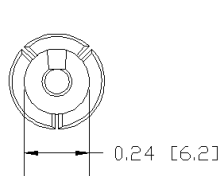
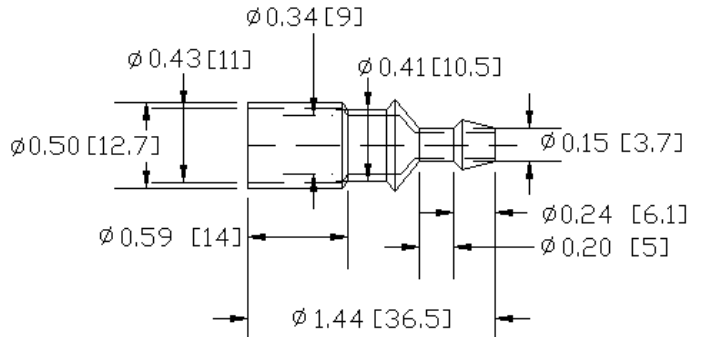
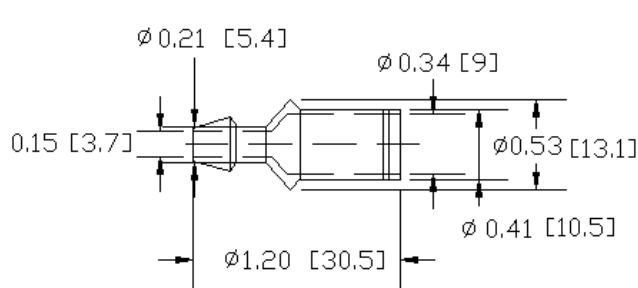
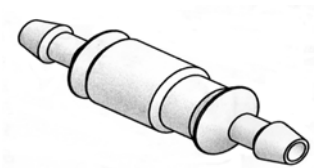
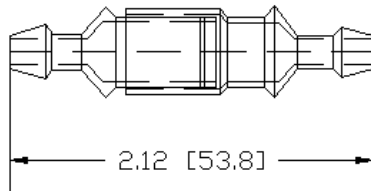
LPA-04Y No Wire

LPA-04Y-##R

Where ## is optional wire gauge

Wire Gauge	Max. Amperage
14 AWG	20 A
16 AWG	15 A
18 AWG	10 A
20 AWG	7.5 A

Mechanical Dimensions: Inches [mm]



Warning:



- Operation beyond the specified maximum ratings or improper use may result in damage and possible electrical arcing and/or flame.
- Avoid contact of device with chemical solvent. Prolonged contact will damage the device performance.
- Not designed for prolonged liquid exposure or submersible applications.