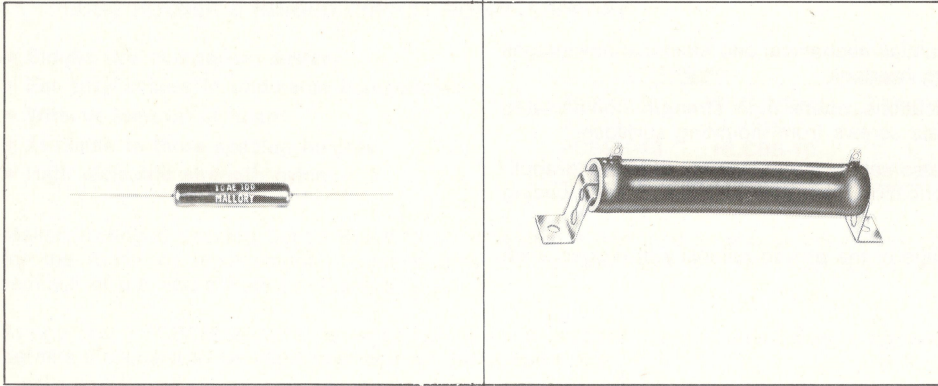


Power Resistors



Fixed and Adjustable Wirewound



Highlights:

- Power Ratings: 3 watts to 225 watts
- Leadless types furnished with hardware
- Resistance: 1 Ω to 100 K Ω
- Coating: Vitreous enamel
- Adjustable vitreous wire wound available

TYPE AE WIRE-WOUND RESISTORS AXIAL LEAD VITREOUS ENAMEL COATED

Mallory type AE wire-wound resistors have axial leads and a tough vitreous enamel coating. Available in three power ratings: 3, 5 and 10 watts. **To order:** use type number followed by resistance value (e.g., 3AE4000).

Specifications

Tolerance ± 5%

Temperature Coefficient

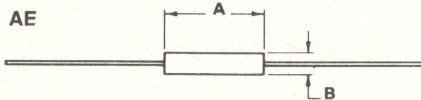
0 ± 30 ppm/°C 10 ohms and above.

0 ± 50 ppm/°C 1 to 9.99 ohms.

Dielectric Withstanding Voltage 1000 VAC.

Overload 10X rated wattage for 5 sec. for 5 watt size and larger. 5X rated wattage for 5 sec. under 5 watt size.

		Ohms							
3-WATT TYPE 3AE	1.0	15	39	120	300	600	1500	3900	8000
	1.5	18	40	125	330	680	1800	4000	9000
	2.0	20	47	150	350	750	2000	4500	10,000
	3.0	22	50	180	390	800	2200	4700	
	4.0	25	56	200	400	820	2500	5000	
	5.0	27	68	220	450	900	2700	6000	
	7.5	30	75	225	470	1000	3000	6800	
	10	33	82	250	500	1100	3300	7000	
	12	35	100	270	560	1200	3500	7500	

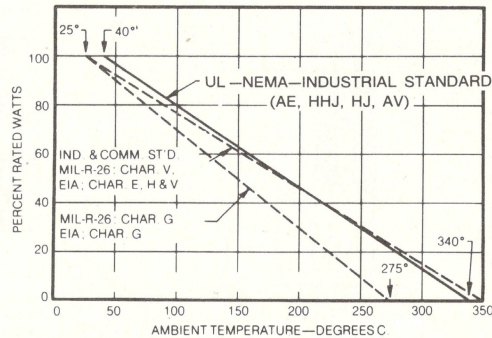


TYPE AE RESISTOR SIZES

Diameter	Length	Lead	Catalog No.
1/4"	9/16"	#20	3AE
1/4"	1"	#20	5AE
11/32"	1 15/16"	#20	10AE

		Ohms							
5-WATT TYPE 5AE	1.0	15	47	180	400	900	2700	6000	
	1.5	20	50	200	450	1000	3000	6800	
	2.0	22	56	220	470	1100	3300	7000	
	3.0	25	68	225	500	1200	3500	7500	
	4.0	27	75	250	560	1500	3900	8000	
	5.0	30	82	270	600	1800	4000	9000	
	7.5	33	100	300	750	2000	4500	10,000	
	10	35	125	330	800	2200	4700	12,000	
	12	40	150	350	820	2500	5000	20,000	
	10-WATT TYPE 10AE	1.0	18	47	180	400	1100	3500	9000
1.5		20	50	200	450	1200	4000	10,000	
2.0		22	56	220	500	1500	4500	12,000	
3.0		25	68	225	600	1750	4700	13,000	
4.0		27	75	250	680	1800	5000	15,000	
5.0		30	82	270	750	2000	5600	20,000	
7.5		33	100	300	800	2200	6000	25,000	
10		35	120	330	820	2500	7000	30,000	
12		39	125	350	900	3000	7500	35,000	
15		40	150	390	1000	3300	8000	40,000	

Derating (AE, HHJ, HJ, AV)



Types HHJ, HJ, AV

To Order: Use type number followed by resistance value (e.g., 1HJ10, 1AV10).

Specifications

Tolerance ± 5% HJ, ± 10% AV

Temperature Coefficient

0 ± 400 ppm/°C 1 ohm to 20 ohms.

0 ± 260 ppm/°C above 20 ohms.

Dielectric Withstanding Voltage

Measured from terminal to mounting bracket

12 to 100 watts size, 1000 volts AC.

175 and 225 watts size, 3000 volts AC.

Overload 10 times rated wattage for 5 sec.

Core Tubular ceramic.

Coating Vitreous Enamel.

MOUNTING FEET (For HHJ, HJ, AV types)

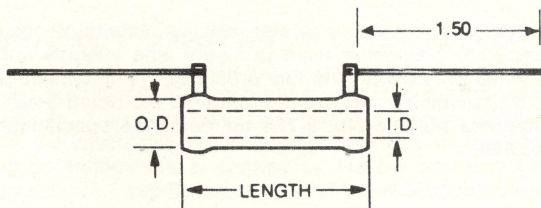
Fits Type	Catalog No.
8, 12 watt	5
20 watt	7
25, 50 watt	9
100 watt	12
175, 225 watt	18

Lake-View Electronics Corp. 1054 Pioneer Rd. Grafton, WI Ph: 262-377-8250 Fax: 262-375-0109

www.lvelectronics.com

Email: sales@lvelectronics.com

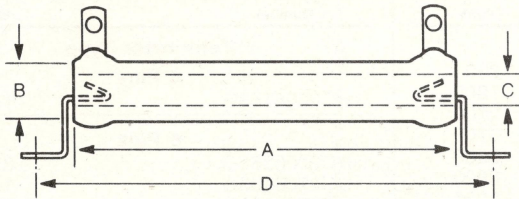
FIXED VITREOUS TYPE HHJ AND HJ RESISTORS (Tol. ± 5%)



HHJ thru 2HJ

DIMENSIONS (Inches)

Type	Length	O.D.	I.D.
HHJ	1.000	0.313	0.188
1HJ	1.750	0.313	0.188
2HJ	2.000	0.438	0.250



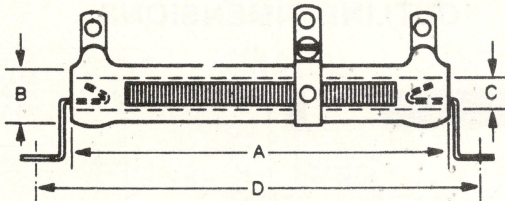
2.5HJ thru 20HJ

8-WATTS TYPE HHJ	Type	Ohms							
		1.0	1.5	2.0	3.0	4.0	5.0	7.5	
	1.0	10	40	200	450	900	2000	4500	9000
	1.5	15	50	225	500	1000	2250	5000	10,000
	2.0	20	75	250	600	1100	2500	6000	12,500
	3.0	25	100	300	700	1200	3000	7000	15,000
	4.0	30	125	350	750	1250	3500	7500	20,000
	5.0	35	150	400	800	1500	4000	8000	25,000
	7.5								

		Ohms							
12-WATT TYPE 1HJ	0.5*	10	50	300	800	2000	6000	12,500	30,000
	1.0	12	75	350	900	2250	7000	13,500	35,000
	1.5	15	100	400	1000	2500	7500	15,000	40,000
	2.0	20	125	450	1100	3000	8000	16,000	45,000
	3.0	25	150	500	1200	3500	8500	18,000	50,000
	4.0	30	200	600	1250	4000	9000	20,000	
20-WATT TYPE 2HJ	1.0	25	200	500	1200	2500	5000	10,000	50,000
	2.0	50	250	650	1250	2750	6000	12,500	100,000
	3.0	75	300	700	1500	3000	7000	15,000	
	5.0	100	350	750	1750	3500	7500	25,000	
25-WATT TYPE 2.5HJ	1.0	5.0	50	200	800	2500	6000	15,000	50,000
	2.0	10	75	250	1000	3000	7500	20,000	100,000
	3.0	15	100	500	1500	4000	10,000	25,000	
50-WATT TYPE 5HJ	1.0	5.0	75	200	750	2000	4000	8000	25,000
	2.0	10	100	250	1000	2500	5000	10,000	50,000
	3.0	25	150	500	1500	3000	7500	15,000	100,000
100-WATT TYPE 10HJ	1.0	5.0	50	150	1000	3000	50,000		
	2.0	10	75	250	1500	10,000	100,000		
	4.0	25	100	500	2000	20,000			
175-WATT TYPE 16HJ	1.0	10	50	100	250	500	1000	3000	100,000
	5.0	25							
225-WATT TYPE 20HJ	1.0	5.0	50	150	1000	2500	10,000	30,000	50,000
	2.0	10	75	250	1500	3000	20,000	40,000	100,000
	4.0	25	100	500	2000	5000	25,000		

*Tolerance, ±10%

ADJUSTABLE VITREOUS TYPE AV RESISTORS (Tol. ± 10%)



1AV thru 20AV

DIMENSIONS (Inches)

Type	A	B	C	D
1AV	1.75	.313	.188	2.19
2.5HJ, 2AV	2.00	.562	.313	2.75
5HJ, 5AV	4.00	.562	.313	4.75
10HJ, 10AV	6.50	.750	.500	7.38
16HJ	8.50	1.125	.750	9.38
20HJ, 20AV	11.50	1.125	.750	11.38

ADJUSTABLE CLIPS

Fits Type	Catalog No.	Fits Type	Catalog No.
1AV	2115	10AV	2125
2AV, 5AV	2121	20AV	2133

12-WATT TYPE 1AV	1.0	10	75	250	500	1250	2500	4500	8000
	2.0	15	100	300	600	1500	3000	5000	8500
	3.0	20	150	350	750	2000	3500	7000	9000
	5.0	25	200	400	1000	2250	4000	7500	10,000
	7.5	50							
25-WATT TYPE 2AV	1.0	7.5	25	150	400	1250	3000	7500	20,000
	2.0	10	50	200	500	1500	4000	10,000	25,000
	3.0	15	75	250	750	2000	5000	12,000	
	5.0	20	100	300	1000	2500	6000	15,000	
50-WATT TYPE 5AV	1.0	10	100	300	1000	3000	7500	20,000	40,000
	2.0	25	150	400	1500	4000	10,000	25,000	50,000
	3.0	50	200	500	2000	5000	15,000	30,000	100,000
	5.0	75	250	750	2500				
100-WATT TYPE 10AV	1.0	4.0	25	250	1500	10,000	25,000	50,000	
	2.0	5.0	50	500	2500	15,000	30,000	75,000	
	3.0	10	100	1000	5,000	20,000	40,000	100,000	
225-WATT TYPE 20AV	1.0	3.0	10	50	250	100	2500	10,000	30,000
	2.0	5.0	25	100	500	1500	5000	25,000	100,000

NOTE: HHJ, HJ, and AV resistors are supplied less mounting feet when packaged bulk. To order use catalog number listed on previous page.