

# Metal Oxide Film Resistors

(Flame proof construction UL-1412)



MO Series

MERITEK

## PART NUMBERING SYSTEM

**MO**    **1W**    **103**    **J**    **TR**

Meritek Series

Power Rating

CODE	1/4W	1/2WS	1/2W	1W	2W	3W
	0.25W	0.5W	0.5W	1W	2W	3W

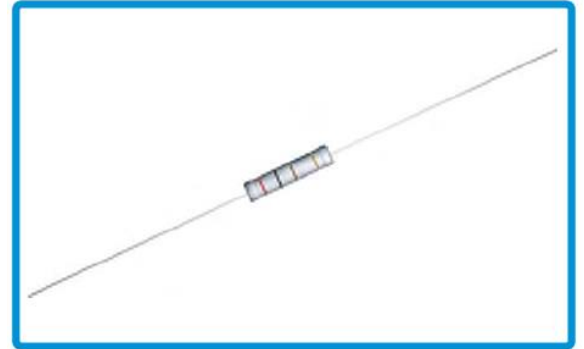
Resistance  
 First 2 digits are significant  
 3<sup>rd</sup> digit is multiplier  
 "R" indicates decimal value below 10 ohm

Tolerance

CODE	J	G	F
Tolerance (%)	± 5	± 2	± 1

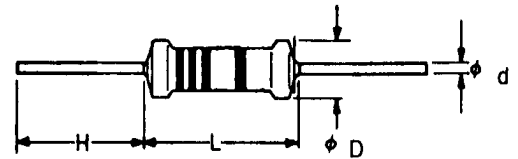
TR: Tape & Reel  
 B: Bulk

Note: "S" in "MOXWS-" denotes small body size



## DIMENSIONS

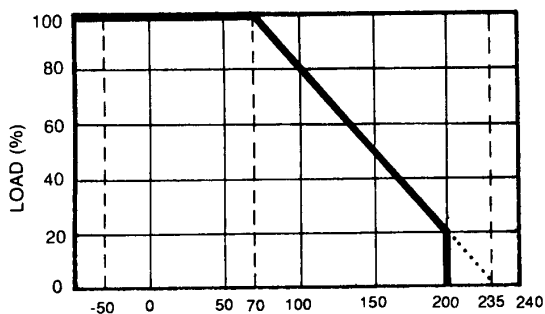
Type		Body		Leadwire	
		(L)	(D)	(H)	(d±0.03)
MO1/4W	MO1/2WS	6.3±0.5	2.3 ±0.3	28±2	0.55±0.03
MO1/2W	MO1WS	9.0±0.5	3.2 ±0.5	26±2	0.65±0.03
MO1W	MO2WS	11.5±1.0	4.5±0.5	35±2	0.78±0.03
MO2W	MO3WS	15.5±1.0	5.0±0.5	32±2	0.78±0.03
MO3W	MO5WS	17.5±1.0	6.5±0.5	35±2	0.78±0.03
MO5W	MO7WS	24.5±1.0	8.5±0.5	35±2	0.78±0.03



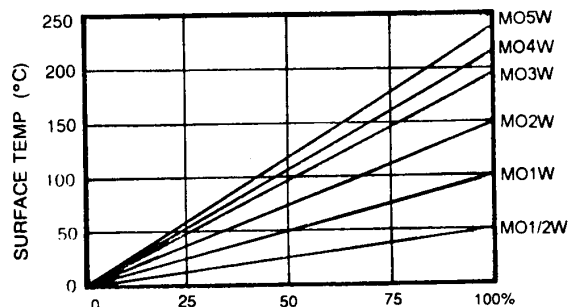
## SPECIFICATIONS

Power rating @ 70°C	1/4W	1/2WS	1/2W	1WS	1W	2WS	2W	3WS	3W	5W	5WS	7WS
Max working voltage	200V	250V	300V	500V	500V	500V	550V	750V	800V	1000V	1000V	1000V
Max overload voltage	350V	400V	500V	600V	600V	600V	600V	800V	1000V	1000V	1000V	1000V
Dielectric withstanding voltage	350V	350V	400V	500V	500V	500V	500V	600V	750V	750V	750V	750V
Operation Temp. Range	-55°C to +235°C											
Temp. Coefficient	±200ppm/°C											
Value Range ±1% ±2% ±5%	1Ω~510KΩ, E24 Series											

## DERATING CURVE



## TEMPERATURE RISE



# Metal Oxide Film Resistors

(Flame proof construction UL-1412)

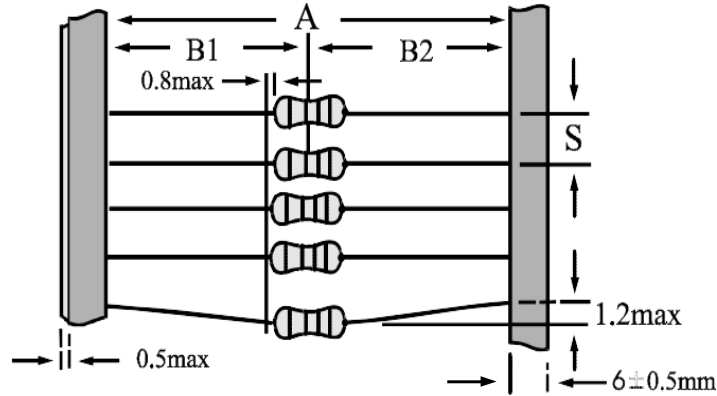


MO Series

MERITEK

## TAPING SPECIFICATION

Bandoleer for Axial leads



STYLE	DIMENSIONS (mm)			
Type	A	B1-B2	S(spacing)	Max. deviation of spacing
1/8W	52~53	1.2	5	1 mm per 10 spacing
1/6W				
1/4WS	26~27	1	5	
0.4W(0204)				
1/2WSS				
1/4W	52~53	1.2	5	
1/2WS				
0.6W(0207)	26~27	1	5	
1WSS				
1/3W	52~53	1.2	5	
1/2W				
1WS	52~53	1.2	5	
2WSS				
1W	52~53	1.5	5	
2WS				
3WSS	73~74	1.5	10	
2W	52~53			
3WS		73~74	1.5	
4WSS				
3W	52~53	1.5	10	
5WS	73~74			
5W		88~89	1.5	10
7WS				

# Metal Oxide Film Resistors

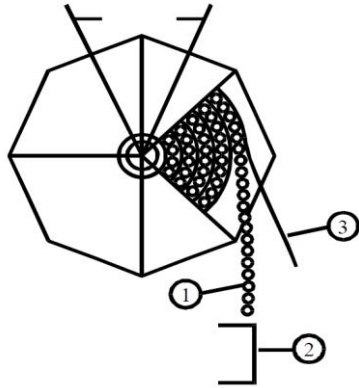
(Flame proof construction UL-1412)



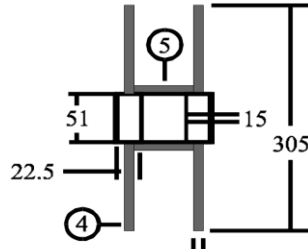
MO Series

MERITEK

## TAPE ON REEL PACKING

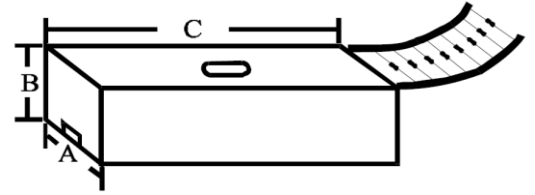


300mm leader at beginning



1. RESISTOR
2. BANDOLIER
3. PAPER
4. FLANGE
5. CYLINDER

## TAPE ON BOX PACKING



STYLE	TAPE ON REEL		TAPE ON BOX			
	Across Flange(A)	Qty Per Reel	W(A)	H(B)	L(C)	Qty Per Box
1/8W	72	5000	80	75	264	5000
1/6W						
1/4WS						
0.4W(0204)						
1/2WSS	72	5000	80	105	264	5000
1/4W						
1/2WS						
0.6W(0207)						
1WSS	72	2500	80	46	264	1000
1/3W						
1/2W						
1WS						
2WSS	95	2000	103	82	265	1000
1W						
2WS						
3WSS						
2W	95	1000	103	96	265	1000
3WS						
4WSS						
3W						
5WS	110	500	115	75	270	250
5W						
7WS						