



RAYEX ELEC.

LB SERIES

FEATURES

- High performance power relay
- PCB terminal and solder lug terminal and flanged case are available
- LED version is available
- UL, CUL, TUV, and CE approved
- Using at control equipment, vending machines, cooking appliances, office machine, domestic appliances, etc.



UL FILE NO.: E131959
 CUL FILE NO.: E131959
 TUV FILE NO.: R09956267

ORDERING INFORMATION

LB1 N — 12 D F S
 1 2 3 4 5 6

1. Type

- LB1(1PDT) : 15A
- LB2(2PDT) : 12A
- LB2H(2PDT) : 10A
- LB4H(4PDT) : 5A

2. LED

- Nil : Without LED
- N : With LED

3. Coil Nominal Voltage

- 4. Coil Nominal Voltage Type
- D : DC
- A : AC

5. Cover Type

- Nil : Standard Type
- F : Flange Cover
- T : Test button

6. Terminal Type

- S : Solder Lug / Plug-In Terminal
- P : PCB Terminal

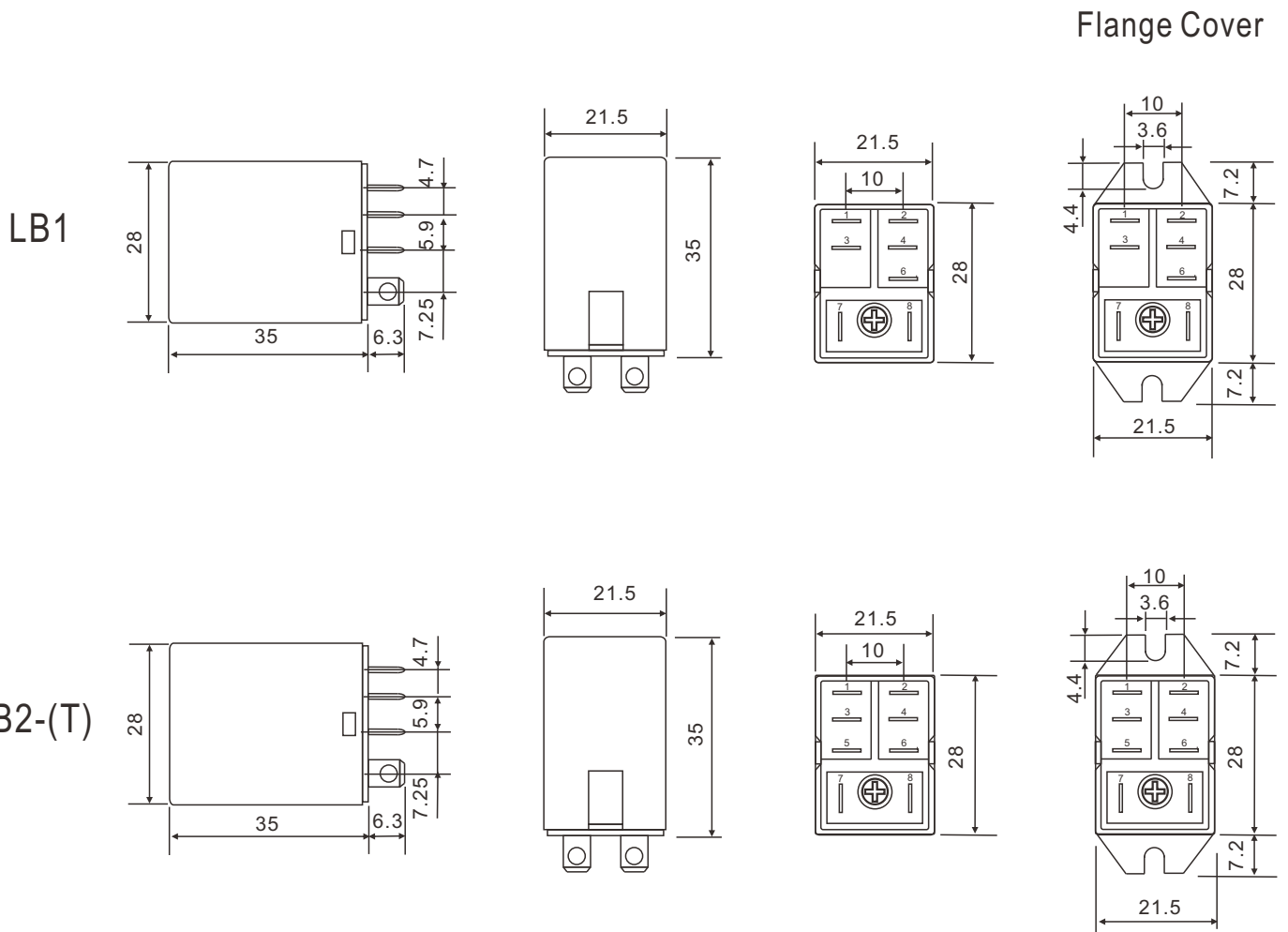
COIL DATA(at 25°C)

| AC 1.2VA | | | | DC 0.9-1.1W | | | | |
|--------------------------------|----------------------------|-----------------------------|------------------------------|----------------------------|----------------------------|----------------------|-----------------------------|------------------------------|
| Coil Nominal Voltage (50/60Hz) | Resistance Tol.±10% (Ohms) | Maximum Pick Up Voltage (V) | Minimum Drop Out Voltage (V) | Coil Nominal Voltage (VDC) | Resistance Tol.±10% (Ohms) | Nominal Current (mA) | Maximum Pick Up Voltage (V) | Minimum Drop Out Voltage (V) |
| 6 | 10 | 4.8 | 1.8 | 6 | 40 | 150 | 4.5 | 0.6 |
| 12 | 45 | 9.6 | 3.6 | 12 | 160 | 75 | 9.0 | 1.2 |
| 24 | 160 | 19.2 | 7.2 | 24 | 650 | 37 | 18.0 | 2.4 |
| 48 | 670 | 38.4 | 14.4 | 48 | 2,600 | 19 | 36.0 | 4.8 |
| 100/110 | 3,900 | 88.0 | 33.0 | 100/110 | 11,000 | 9 | 82.5 | 11.0 |
| 220/240 | 16,000 | 176.0 | 66.0 | | | | | |

CONTACT RATING

| | | | | |
|-----------|-------------------------|------------------|-----|-----|
| LB1 TYPE | Resistive (Cos.θ = 1) | AC 240V / DC 30V | 15A | UL |
| | | AC 240V / DC 24V | 15A | TUV |
| | Inductive (Cos.θ = 0.4) | AC 240V | 8A | TUV |
| LB2 TYPE | Resistive (Cos.θ = 1) | AC 240V / DC 30V | 12A | UL |
| | | AC 240V / DC 24V | 10A | TUV |
| | Inductive (Cos.θ = 0.4) | AC 240V | 5A | TUV |
| LB2H TYPE | Resistive (Cos.θ = 1) | AC 240V / DC 30V | 10A | UL |
| | | AC 240V / DC 24V | 10A | TUV |
| | Inductive (Cos.θ = 0.4) | AC 240V | 5A | TUV |
| LB4H TYPE | Resistive (Cos.θ = 1) | AC 240V / DC 30V | 5A | UL |
| | | AC 240V / DC 24V | 5A | TUV |
| | Inductive (Cos.θ = 0.4) | AC 240V | 3A | TUV |

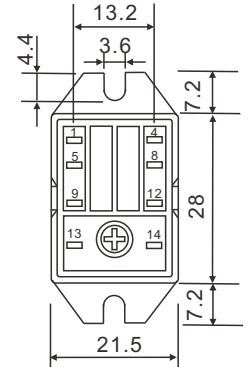
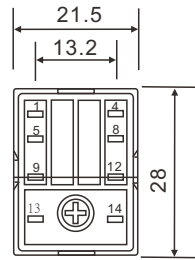
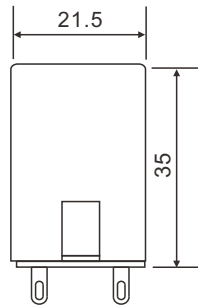
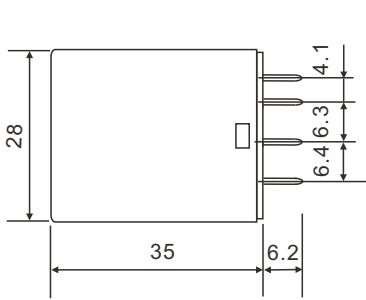
DIMENSIONS(±0.2mm)



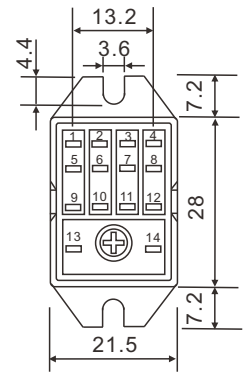
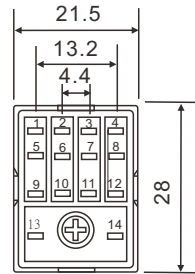
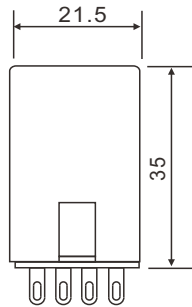
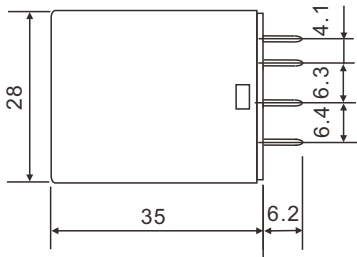
DIMENSIONS(±0.2mm)

Flange Cover

LB2H-(T)

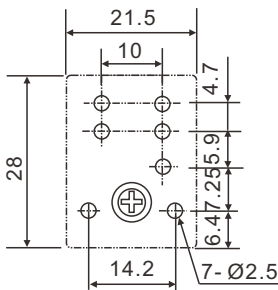


LB4H-(T)

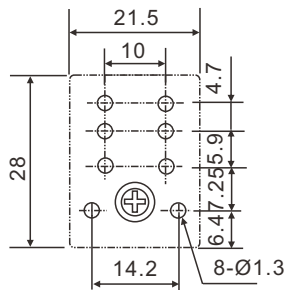


DRILLING PLAN

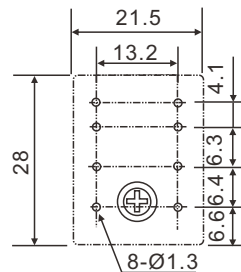
LB1



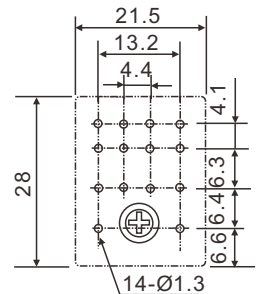
LB2



LB2H

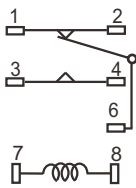


LB4H

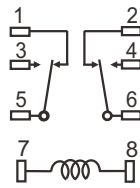


WIRING DIAGRAM

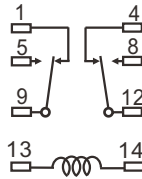
LB1



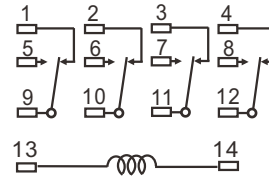
LB2



LB2H

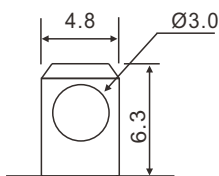


LB4H

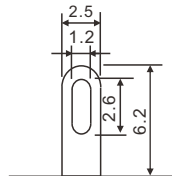


TERMINAL TYPE(±0.2mm)

SOLDER LUG/PLUG-IN

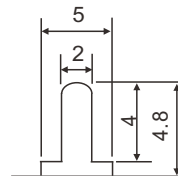


LB1, LB2



LB2H, LB4H

PRINTED CIRCUIT



GENERAL DATA

| | |
|-----------------------|---|
| Insulation Resistance | 1,500 MΩ Min. (DC 500V) |
| Dielectric Strength | 750 VAC, 50/60Hz between contact. |
| | 1,500 VAC, 50/60Hz between all elements. |
| Contact Material | Agcdo Alloy. |
| Contact Resistance | 100 milliohms max. (initial value) |
| Shock Resistance | Malfunction: 10G(11ms) ; Destructive: 100G(6ms) |
| Vibration Resistance | Malfunction: 10 to 55 Hz. at Double Amplitude of 1.5 mm |
| | Destructive: 10 to 55 Hz. at Double Amplitude of 1.5 mm |
| Operation Time | 15 ms max. |
| Release Time | 15 ms max. |
| Temperature Range | - 40°C ~ + 60°C |
| Expected Life | With operation rate 30/min. |
| | Mechanical - 10,000,000 operations min. |
| | Electrical - 100,000 operations min. at rated load. |
| Weight | 37 grams |