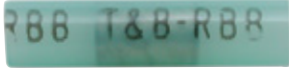


Splice connectors

Nylon-insulated butt splices & Tefzel® insulated butt splices

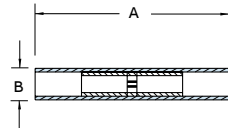


Nylon-insulated butt splices



| Cat. no. | Pkg. qty. | Max. ins. dia. (in.) | Wire range (AWG) | Rec. tool | Dimensions (in.) | |
|----------|-----------|----------------------|------------------|-----------|------------------|------|
| | | | | | A | B |
| 2RA18 | 100 | 0.115 | 22-18 | ERG4001 | 1.19 | 0.18 |
| RAA21 | 1,000 | 0.115 | 22-18 | | | |
| 2RB14 | 100 | 0.148 | 16-14 | | 1.19 | 0.21 |
| RBB21 | 1,000 | 0.148 | 16-14 | | | |
| 2RC10 | 50 | 0.210 | 12-10 | | 1.26 | 0.28 |
| RCC21 | 500 | 0.210 | 12-10 | | | |
| 2RD8 | 25 | 0.340 | 8 | ERG4007 | 1.69 | 0.36 |
| RDD27 | 200 | 0.340 | 8 | | TBM6S | |
| 2RE6 | 20 | 0.420 | 6 | TBM6S | 1.85 | 0.45 |
| REE28 | 200 | 0.420 | 6 | | | |
| 2RF4 | 15 | 0.510 | 4 | TBM6S | 1.85 | 0.52 |

Diagram

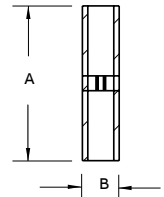


Tefzel insulated butt splices



| Cat. no. | Pkg. qty. | Wire range (AWG) | Max. ins. dia. (in.) | Rec. tool | Dimensions (in.) | |
|----------|-----------|------------------|----------------------|-----------|------------------|-------|
| | | | | | A | B |
| RAAT21 | 1,000 | 22-18 | 1.22 | WT145C | 1.22 | 0.115 |
| RBBT21 | 1,000 | 16-14 | 1.22 | | 1.22 | 0.148 |
| RCCT21 | 1,000 | 12-10 | 1.22 | | 1.22 | 0.210 |

Diagram



Tefzel is a registered trademark of DuPont.