

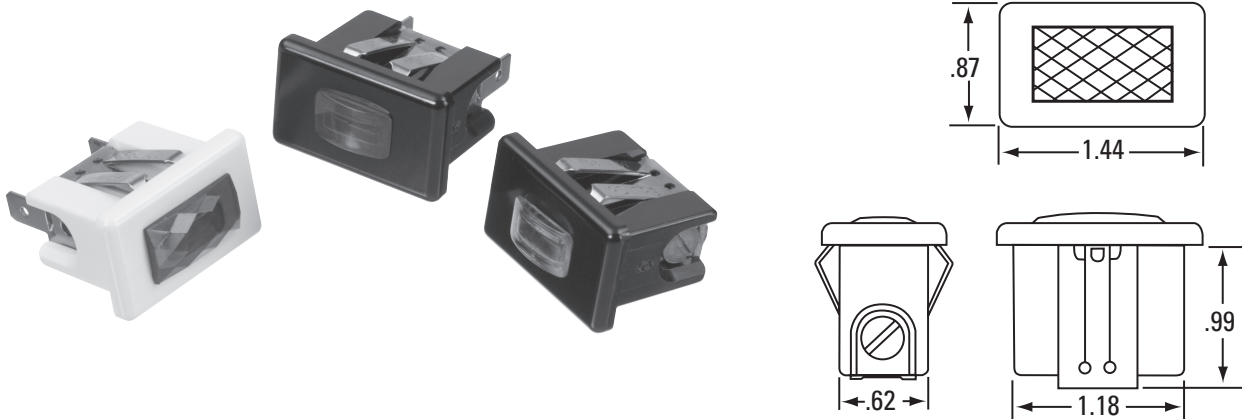
Series 13

Features

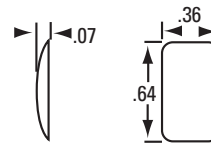
- Snap fits into 1.200" x .640" panel cutout
- Incandescent and neon illumination
- Two lens styles available
- Suggested for High Temperature applications
- Two termination styles available

Specifications

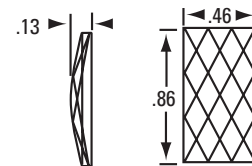
- Body Material: Phenolic
- Lens Material: Polycarbonate
- Terminals: .250 Tabs
- Panel Thickness: .045 to .065
- Certifications: Contact Us



Series	Lamp		Termination		Base		Bezel		Lens				
XX	XX		X		X		X		XXX		X	0	
13	Voltage	Type	Code	Style	Code	Color	Code	Finish	Code	Style	Code	Color	Code
	6	INCAND	32	.250 Tabs	4	White	1	None	0	Standard Plain	102	Red	1
	14	INCAND	35	Screws	6	Black	2			Faceted Plain	112	Amber	2
	28	INCAND	39			Brown	3					Clear	3
	125	NEON	50									Green	4
	250	NEON	52									Blue	5
		Special	XX										

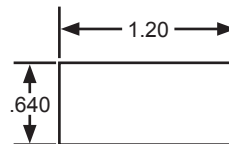


10 Standard Lens



11 Faceted Lens

Panel Cutout



Additional Options Available:
Contact Factory