

ZT625

AUTOMOTIVER RELAY

Lake-View Electronics Corporation
 www.lvelectronics.com
 Ph: 1-800-686-8439
 Fx: 262-375-0109
 sales@lvelectronics.com

26.5x26x25

Features

- 50A switching capability
- Extended temp.range up to 85°C
- 1 Form A 、 1 Form C contact arrangement
- Sealing type and snap type
- Transient suppressor

CONTACT DATA

Contact form	1A、1C
Max. switching current	50A
Max. switching voltage	27V
Max. Continuous current	50A 14VDC
Min. contact load	1A 6VDC
Contact Resistance	Max. 100mΩ at 6VDC 1A
Contact Material	Ag Alloy
Contact Resistance Load	50A 14VDC
Life Electrical (23°C)	1x10 ⁵ (900ops/h)
Life Mechanical (23°C)	1x10 ⁶ (18000ops/h)

GENERAL DATA

Insulation Resistance	Min. 100MΩ at 500VDC
Dielectric Strength	500VAC 1 min
Operate Time	Max :15ms
Release Time	Max: 10ms
Vibration resistance	10-55 Hz
Shock resistance	98m/S ²
Ambient temperature	-40°C~85°C
Termination	QC
Mechanical data	80N
Package form	Hermetic type、Snap type

COIL DATA

Standard

Nominal voltage VDC	Pick-up Voltage VDC max	Drop-out Voltage VDC min	Coil resistance x(1±10%) Ω	Parallel resistance x(1±5%) Ω	Equivalent resistance x(1±10%) Ω	Power consumption W
12	8.4	1.2	85	—	—	1.7
12	8.4	1.2	85	680	75	1.9

ORDERING INFORMATION

	ZT625	-12V	-C	-R	-G	-P	-M	-50A
Type:	ZT625							
Coil voltage:	12:12VDC、24:24VDC							
Contact arrangement:	A: Form A C: Form C							
Parallel coil components	R:Parallel transient suppression resistors D:The anode of diode is connected to pin 85. Nil:Without parallel components							
Structure form:	G/Nil:Dust cover T:Steel bracket S:Flanged cover							
Terminal form:	Nil:QC type P:PCB type							
Package form:	M: Hermetic type Nil: Snap type							
Contact rated resistive load:	50A/14VDC							

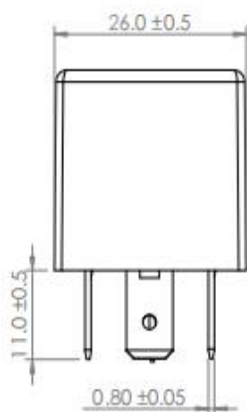


Ningbo Zhongtong Electrical Appliance Co., Ltd

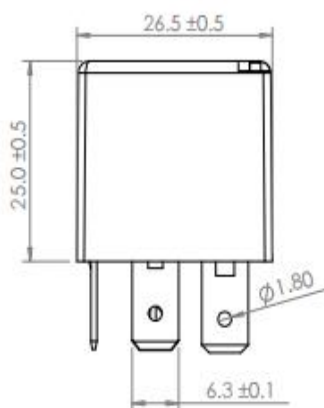
ISO/IATF16949

Version number: ZT01-20210904

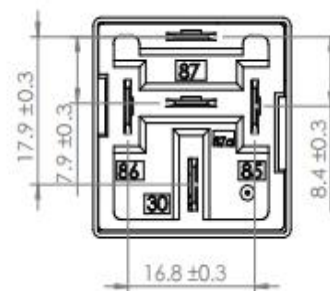
OUTLINE DIMENSIONS AND WIRING DIAGRAM



Standard

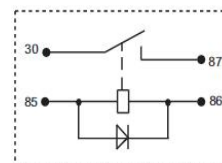
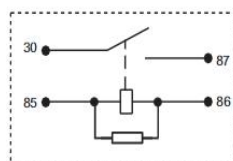
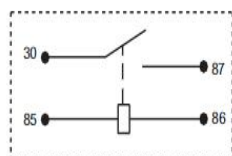


Shunt resistance

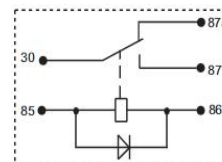
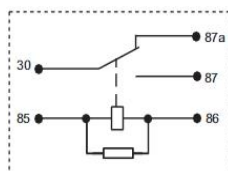
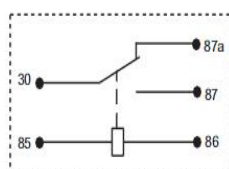


Parallel Diode

Form A

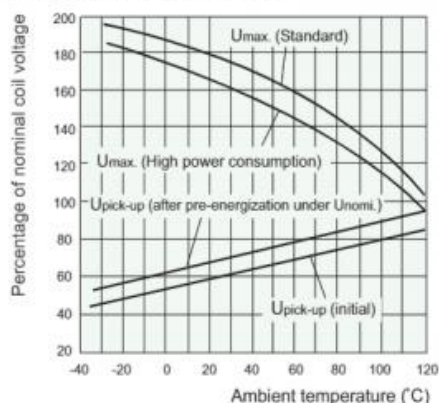


Form C



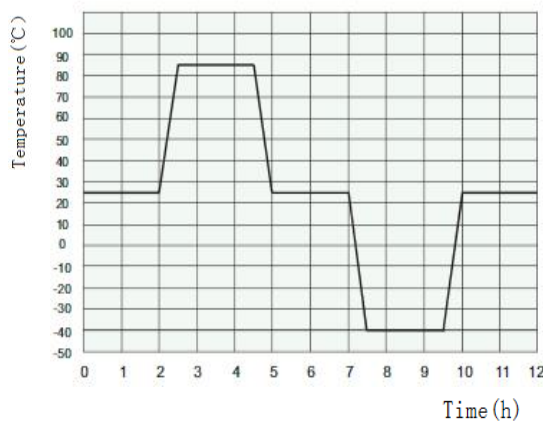
CHARACTERISTIC CURVES

1. Coil operating voltage range



- 1) There should be no contact load applied when maximum continuous operation voltage is applied on coil.
- 2) The operating voltage is connected with coil energized time and voltage. After energized, the operating voltage will increase.
- 3) The maximum allowable coil temperature is 180°C. For the coil temperature rise which is measured by resistance is average value, we recommend the coil temperature should be below 170°C under the different application ambient, different coil voltage and different load etc.
- 4) If the actual operating coil voltage is out of the specified range, please contact Hongfa for further details.

2. Ambient temperature curve electrical endurance test
Ambient temp. curve (one cycle)



- 1) The minimum temperature in -40°C.
- 2) The maximum temperature in 85°C



Ningbo Zhongtong Electrical Appliance Co., Ltd

ISO/IATF16949

Version number: ZT01-20210904