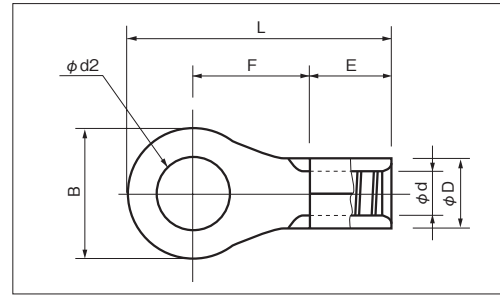
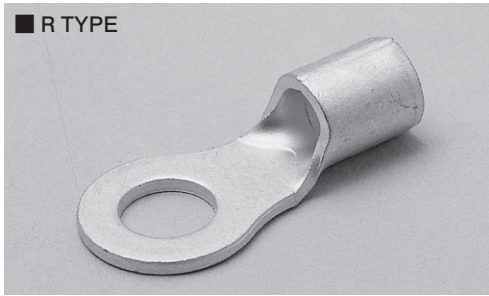


RING TERMINALS (R TYPE)

JIS C 2805



RoHS10
See page 2

A

PART NUMBER	DIMENSIONS mm							WIRE RANGE			TOOL No.		STD QTY/BOX	
	φd2	B	L	F	E	φD	φd	SOLID mm	STRANDED mm ²	AWG	HAND TOOL No.	DIES No.		
R 5.5-3M ※ ○	3.2	6.5	16.9	7.2	6.5	5.6	3.4	1.82 2.89	2.63 6.64	12-10	NH 1 NH 9	NA 10 NA 3	N10 03 N3 7	1,000 (100×10)
R 5.5-3N ※ ○		7.0	17.2											
R 5.5-3S ※ ○		9.0	18.2											
R 5.5-3.5N ※ ○	3.7	7.0	17.2											
R 5.5-3.5S ※ ○		9.0	18.2											
R 5.5-3.5 ○		9.5	19.5	8.2										
R 5.5-4N ※ ○	4.3	7.0	17.2	7.2										
R 5.5-4S ※ ○		9.0	18.2											
R 5.5-4 ●		9.5	19.5											
R 5.5-5N ※ ○	5.3	8.0	17.7	7.2										
R 5.5-5S ※ ○		9.0	18.2											
R 5.5-5 ●		9.5	19.5		8.2									
R 5.5-6S ※	6.4	9.0	23.0	12.0										
R 5.5-6 ●		12.0		10.5										
R 5.5-8S ※	8.4	13.2	22.1	9.0										
R 5.5-8 ●		15.0	28.0	14.0										
R 5.5-10 ●					10.5									
R 5.5-12 ○	13.0	19.2	32.5	16.4										
R 5.5-14 ○	15.0													
R 5.5-16	17.0													
R 5.5-18	19.0	29.5	48.0	26.7										
R 5.5-20	21.0													
R 8-4S ○	4.3	8.0	21.5	9.1	8.4	7.1	4.5	2.89 3.65	6.64 10.52	8	NH 1 NH 9 NOP 60 NOM 60	NA 20	N20 08	1,000 (100×10)
R 8-4 ○		12.0	23.5	9.1										
R 8-5N ※	5.3	9.0	22.0	9.1										
R 8-5S ○		10.0	22.5											
R 8-5 ●		12.0	23.5											
R 8-6S ○	6.4	10.0	22.5	9.1										
R 8-6 ●		12.0	23.5											
R 8-8S	8.4	15.0	29.5	13.6										
R 8-8 ●														
R 8-10 ●	10.5	31.0	50.0	26.1										
R 8-12 ○	13.0				20.0	33.5	15.1							
R 8-14 ○	15.0				22.0	37.0	17.6							
R 8-16	17.0	19.0	50.0	26.1										
R 8-18														
R 8-20	21.0													

- NOTE 1) ● : JIS, UL, CSA ○ : UL, CSA
 2) Refer to page 14 for UL/CSA and proper strip length of wire.
 3) ※Specification is partly different from other ring terminals.